



**Price**  
**£585,000**

**Freehold**

4x  2x  1x 

**Holdstock Road,  
Tenterden, Kent, TN30**

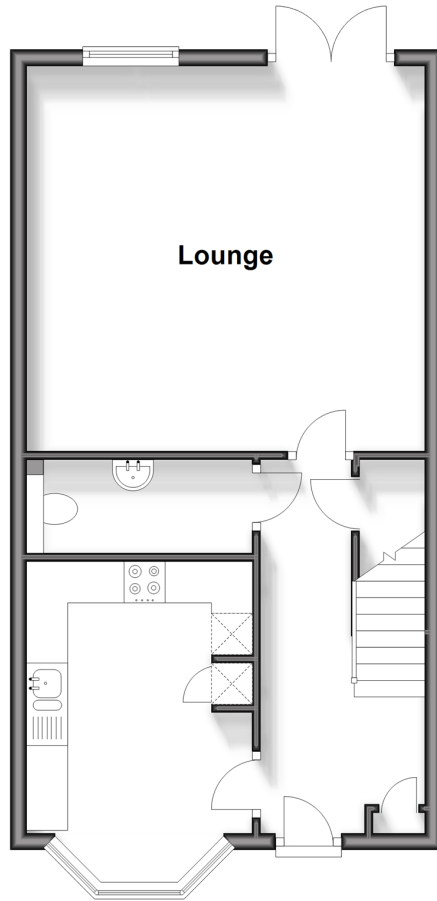
**OVER 60?**

Secure this property  
for up to **59% less!**

*Wards*  
Helping you move forwards

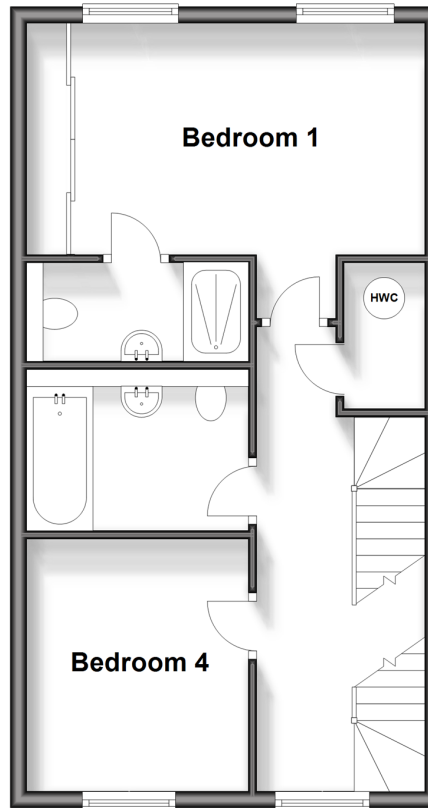
## Ground Floor

Approx. 45.3 sq. metres (487.4 sq. feet)



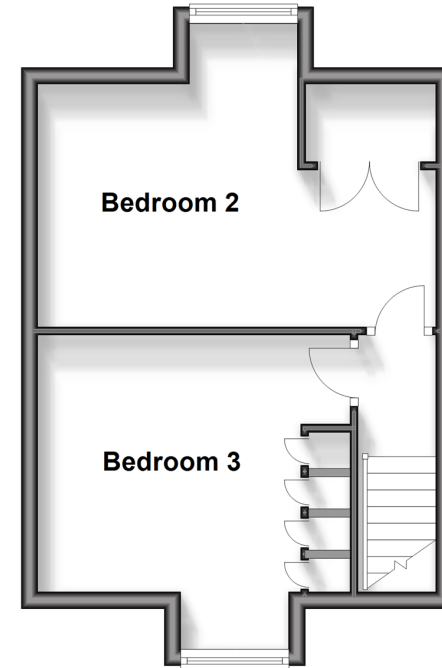
## First Floor

Approx. 45.0 sq. metres (484.5 sq. feet)



## Second Floor

Approx. 31.6 sq. metres (340.6 sq. feet)



## Accommodation

### GROUND FLOOR

Hallway  
Kitchen: 13'2 x 9'7 (4.02m x 2.92m)  
Lounge: 16'1 x 15'6 (4.91m x 4.73m)  
Cloakroom

### FIRST FLOOR

Landing  
Bedroom 1: 13'11 x 9'3 (4.24m x 2.82m)  
En-Suite Shower Room: 9'1 x 3'11 (2.77m x 1.19m)  
Bathroom: 9'1 x 6'7 (2.77m x 2.01m)  
Bedroom 4: 10'1 x 9'1 (3.08m x 2.77m)

### SECOND FLOOR

Landing  
Bedroom 2: 12'8 x 12'8 (3.86m x 3.86m)  
Bedroom 3: 15'11 x 11'10 (4.85m x 3.61m)

### OUTSIDE

Front and Rear Gardens  
Car Port  
Driveway



## Main features

- Beautifully presented 4 bedroom semi-detached house
- 4 years remaining on the NHBC warranty
- Parking for 2 vehicles including the brick built car port
- Fantastic outlook to the front with views of the manicured green
- Highly sought after central Tenterden location moments from the High Street



### Nearest Schools

Primary Schools: Tenterden C of E Junior School 0.1 miles, St Michael's C of E Primary (Tenterden) 1.5 miles, Rolvenden Primary 2.7 miles

Secondary Schools: Homewood School and Sixth Form



### Transport Information

Train Stations: Appledore 5.8 miles, Pluckley 6.9 miles, Ham Street 7.1 miles



### Address

Holdstock Road, Tenterden, Kent, TN30



### Directions

For directions to this property please contact us.



**Wards**  
Helping you move forwards

Call Tenterden Branch 01580 766002 ■ [wardsofkent.co.uk](http://wardsofkent.co.uk)



■ Legal advice should be taken to verify fixtures/fittings, planning, alterations and/or lease details ■ Appliances & services are untested, dimensions are approximate and floor plans are not to scale  
■ Through a Homewise Home For Life Plan people aged 60+ can secure this property for up to 59% less, by purchasing a Lifetime Lease.



14007819/20240424/NS/AQ