



OVER 60?

Secure this property
for up to **59% less!**

Price

£575,000

Freehold

3x  1x  2x 

**Elmshurst Gardens,
Tonbridge, Kent, TN10**

Wards
Helping you move forwards



Main features

- Beautifully presented T1 Gough Cooper family home
- Bright spacious lounge with feature log burner
- Potential to extended - subject to planning
- Great sized rear garden that backs onto woodlands
- Walking distance to local amenities and excellent schools

Accommodation

GROUND FLOOR

Hallway
Lounge: 14'4 x 12'3 (4.37m x 3.74m)
Dining Area: 11'9 x 10'2 (3.58m x 3.10m)
Kitchen: 11'5 x 7'9 (3.48m x 2.36m)
Pantry

FIRST FLOOR

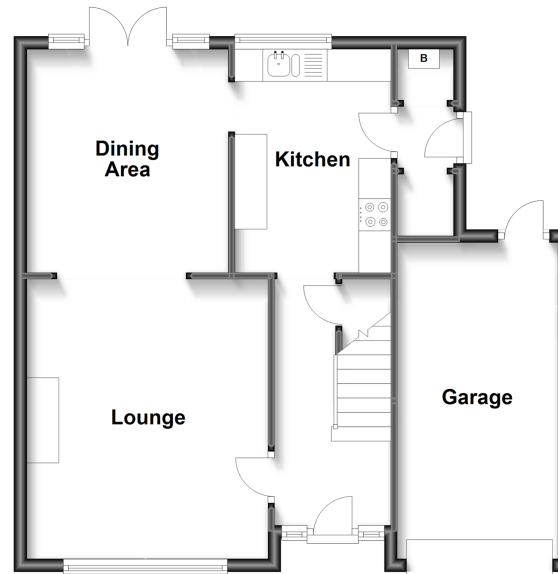
Landing
Bedroom 1: 14'1 x 12'0 (4.30m x 3.66m)
Bedroom 2: 12'4 x 11'2 (3.76m x 3.41m)
Bedroom 3: 9'3 x 8'9 (2.82m x 2.67m)
Bathroom: 8'2 x 5'5 (2.49m x 1.65m)

OUTSIDE

Rear Garden
Garage
Off Road Parking

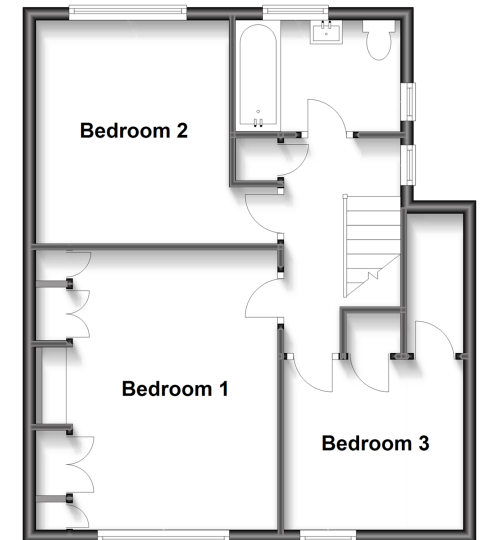
Ground Floor

Approx. 59.4 sq. metres (639.1 sq. feet)



First Floor

Approx. 49.5 sq. metres (533.1 sq. feet)



Call Tonbridge - 01732 770755 ■ wardsofkent.co.uk

■ Legal advice should be taken to verify fixtures/fittings, planning, alterations and/or lease details
■ Through a Homewise Home For Life Plan people aged 60+ can secure this property for up to 59% less, by purchasing a Lifetime Lease.

■ Appliances & services are untested, dimensions are approximate and floor plans are not to scale