



OVER 60?

Secure this property
for up to **59% less!**

Price

£230,000

Leasehold

1x  1x  1x 

**Bridleway House,
Cannons Wharf,
Tonbridge, Kent, TN9**

Wards
Helping you move forwards



Main features

- Beautifully presented fourth floor apartment in modern development
- Bright and spacious living accommodation with plenty of storage
- Private balcony overlooking the well kept communal gardens
- Allocated parking space in the gated underground car park
- Just a short walk to Tonbridge High Street, mainline station and river walks

Accommodation

FOURTH FLOOR

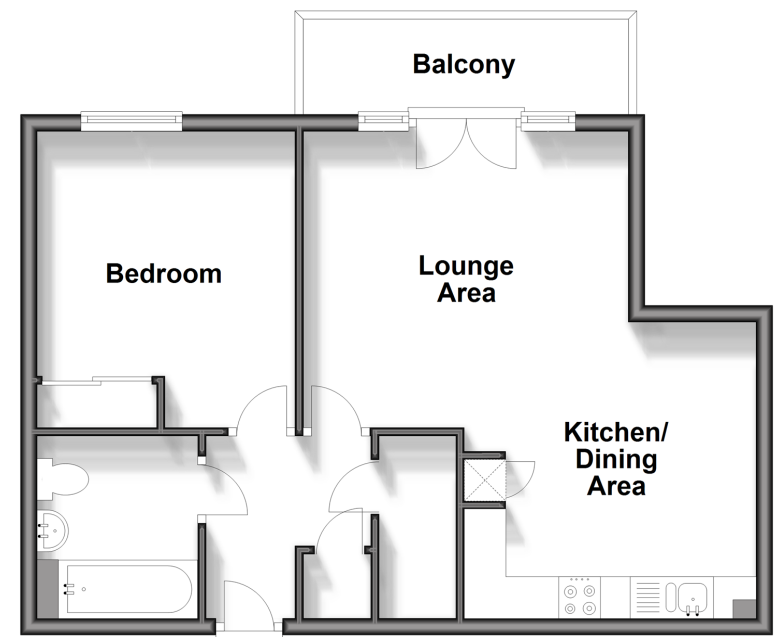
Hallway
 Lounge Area: 13'2 x 11'9 (4.02m x 3.58m)
 Balcony
 Kitchen/Dining Area: 12'5 x 11'9 (3.79m x 3.58m)
 Bedroom: 11'9 x 10'2 (3.58m x 3.10m)
 Bathroom

OUTSIDE

Communal Gardens
 Allocated Parking

Fourth Floor

Approx. 46.3 sq. metres (497.9 sq. feet)



Call Tonbridge - 01732 770755 ■ wardsofkent.co.uk

■ Legal advice should be taken to verify fixtures/fittings, planning, alterations and/or lease details
 ■ Through a Homewise Home For Life Plan people aged 60+ can secure this property for up to 59% less, by purchasing a Lifetime Lease.

■ Appliances & services are untested, dimensions are approximate and floor plans are not to scale



14130164/20231120/MC/JW