



OVER 60?

Secure this property
for up to **59% less!**

Price

£475,000

Freehold

3x  1x  2x 

**Ives Road, Tonbridge,
Kent, TN9**

Wards
Helping you move forwards



Main features

- Well presented family home in sought after location
- Bright spacious lounge with separate dining area
- Large rear garden with patio area and side access
- Within walking distance of Haysden Country Park, High Street and station
- Within the catchment area of sought after schools for all ages

Accommodation

GROUND FLOOR

Hallway
Lounge: 14'9 x 10'9 (4.50m x 3.28m)
Dining Area: 15'5 x 11'9 (4.70m x 3.58m)
Kitchen: 13'7 x 9'4 (4.14m x 2.85m)
Utility

FIRST FLOOR

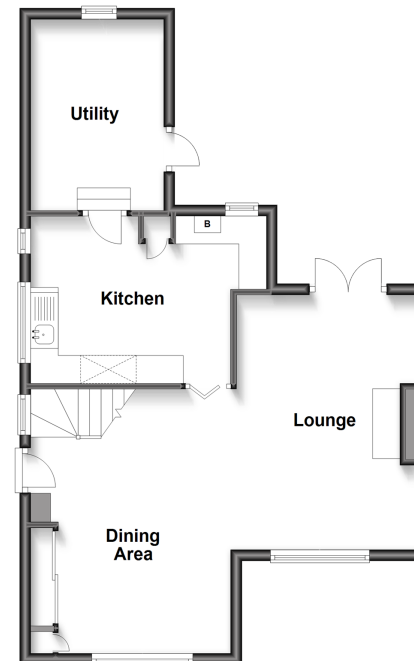
Landing
Bedroom 1: 14'9 x 10'4 (4.50m x 3.15m)
Bedroom 2: 12'11 x 11'3 (3.94m x 3.43m)
Bedroom 3: 9'6 x 6'10 (2.90m x 2.08m)
Bathroom

OUTSIDE

Driveway
Rear Garden

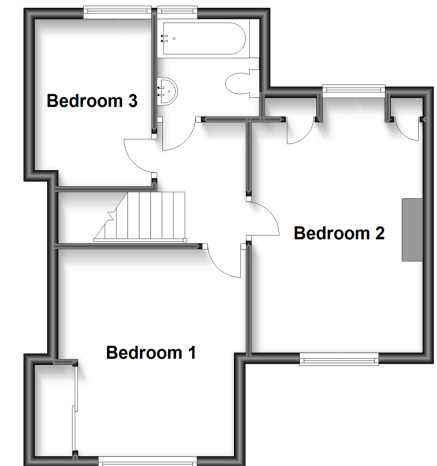
Ground Floor

Approx. 53.4 sq. metres (574.9 sq. feet)



First Floor

Approx. 43.2 sq. metres (465.5 sq. feet)



Call Tonbridge - 01732 770755 ■ wardsofkent.co.uk

■ Legal advice should be taken to verify fixtures/fittings, planning, alterations and/or lease details
■ Through a Homewise Home For Life Plan people aged 60+ can secure this property for up to 59% less, by purchasing a Lifetime Lease.

■ Appliances & services are untested, dimensions are approximate and floor plans are not to scale