

OVER 60?

Secure this property
for up to **59% less!**



Price

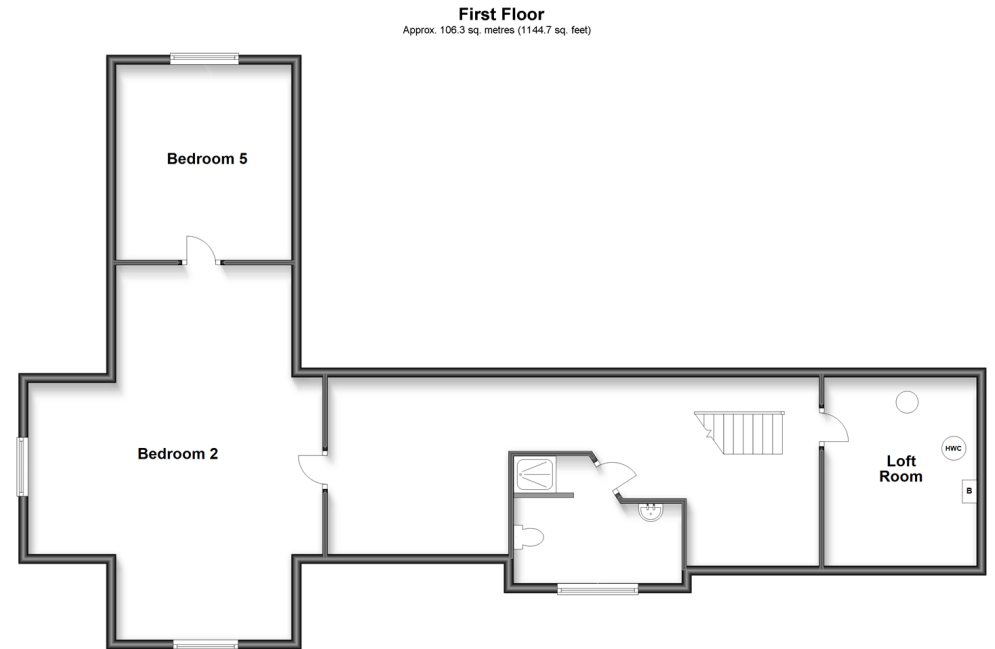
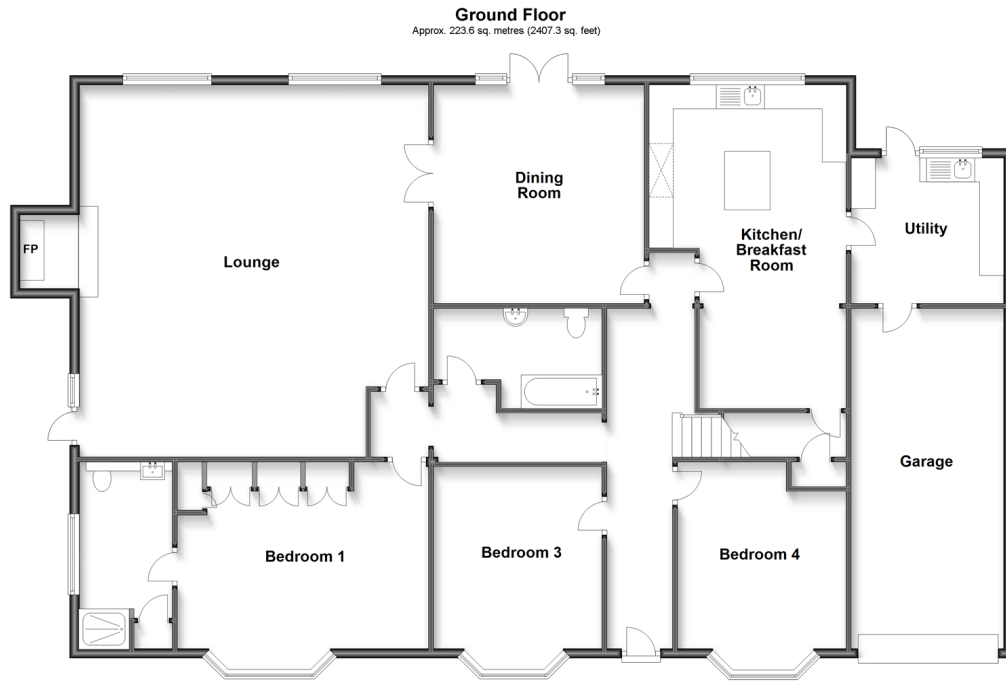
£900,000

Freehold

5x  3x  2x 

Colin Blythe Road, Tonbridge, Kent, TN10

Wards
Helping you move forwards



Accommodation

GROUND FLOOR

Hallway

Lounge: 26'0 x 24'0 (7.93m x 7.32m)

Dining Room: 14'10 x 14'2 (4.52m x 4.32m)

Kitchen Area: 14'9 x 13'10 (4.50m x 4.22m)

Breakfast Area: 10'4 x 9'9 (3.15m x 2.97m)

Utility Room: 10'3 x 9'7 (3.13m x 2.92m)

Bedroom 1: 16'10 x 12'9 (5.13m x 3.89m)

En Suite Bathroom

Bedroom 3: 13'10 x 11'4 (4.22m x 3.46m)

Bedroom 4: 13'9 x 11'4 (4.19m x 3.46m)

Bathroom

FIRST FLOOR

Landing

Bedroom 2: 26'0 x 20'0 (7.93m x 6.10m)

Bedroom 5: 13'0 x 12'0 (3.97m x 3.66m)

Loft Room

Shower Room

OUTSIDE

Front, Side and Rear Gardens

Driveway

Garage



Main features

- Extensive family home in sought after location
- Large bright lounge with feature inglenook fireplace
- Modern fitted kitchen/breakfast room and separate dining room - perfect for family get togethers
- Good sized wrap around garden with patio area
- Walking distance to local amenities and close to popular schools



Nearest Schools

Primary Schools: Woodlands Junior School 0.6 miles, Cage Green Primary 1.2 miles, Slade Primary and Attached Unit for Children with Hearing Impairment 2.0 miles



Transport Information

Train Stations: Tonbridge 2.2 miles, Hildenborough 4.6 miles, Yalding 5.1 miles



Address

Colin Blythe Road, Tonbridge, Kent, TN10



Directions

For directions to this property please contact us.



Wards
Helping you move forwards

Call Tonbridge Branch 01732 770755 ■ wardsofkent.co.uk



- Legal advice should be taken to verify fixtures/fittings, planning, alterations and/or lease details
- Appliances & services are untested, dimensions are approximate and floor plans are not to scale
- Through a Homewise Home For Life Plan people aged 60+ can secure this property for up to 59% less, by purchasing a Lifetime Lease.



14130519/20221010/MC/KA