



Guide Price
£300,000

Freehold

3x  1x  2x 

**Brookfields, Hadlow,
Tonbridge, Kent, TN11**

OVER 60?

Secure this property
for up to **59% less!**

Wards
Helping you move forwards



Main features

- Charming family home in the popular village of Hadlow
- Potential to adapt the current layout to create your dream home
- Modern features such as electric car charging point and solar panels
- Good sized garden with patio area and allocated parking to the rear
- Walking distance to local amenities, schools and Hadlow Collage

Accommodation

GROUND FLOOR

Porch
 Dining Room: 9'6 x 9'2 (2.90m x 2.80m)
 Lounge: 15'4 x 12'0 (4.68m x 3.66m)
 Kitchen: 11'8 x 9'2 (3.56m x 2.80m)
 Downstairs Cloakroom
 Utility : 9'3 x 5'10 (2.82m x 1.78m)
 Conservatory: 12'2 x 5'5 (3.71m x 1.65m)

FIRST FLOOR

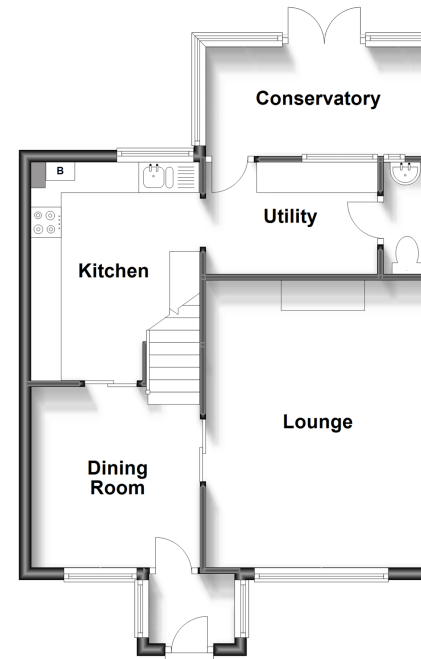
Landing
 Bedroom 1: 12'4 x 10'4 (3.76m x 3.15m)
 Bedroom 2: 12'7 x 9'0 (3.84m x 2.75m)
 Bedroom 3: 9'1 x 6'4 (2.77m x 1.93m)
 Bathroom

OUTSIDE

Rear Garden
 Allocated Parking

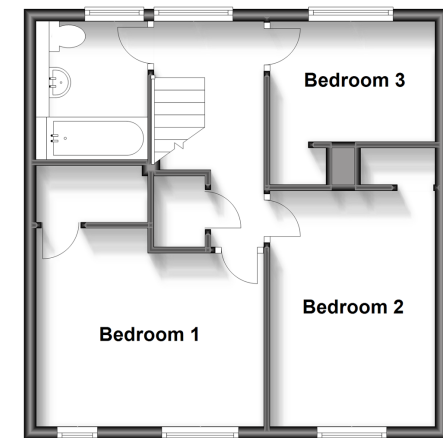
Ground Floor

Approx. 53.1 sq. metres (571.8 sq. feet)



First Floor

Approx. 44.3 sq. metres (476.4 sq. feet)



Call Tonbridge - 01732 770755 ■ wardsofkent.co.uk

■ Legal advice should be taken to verify fixtures/fittings, planning, alterations and/or lease details
 ■ Through a Homewise Home For Life Plan people aged 60+ can secure this property for up to 59% less, by purchasing a Lifetime Lease.

■ Appliances & services are untested, dimensions are approximate and floor plans are not to scale