



Price

£475,000

Freehold

2x  1x  2x 

**Cherry Grove,
Tonbridge, Kent, TN10**

Wards
Helping you move forwards



Main features

- Well presented bungalow in sought after location
- Large garden with shed
- Driveway for off road parking
- Conservatory at rear and potential to extend - subject to planning
- Chain free

Accommodation

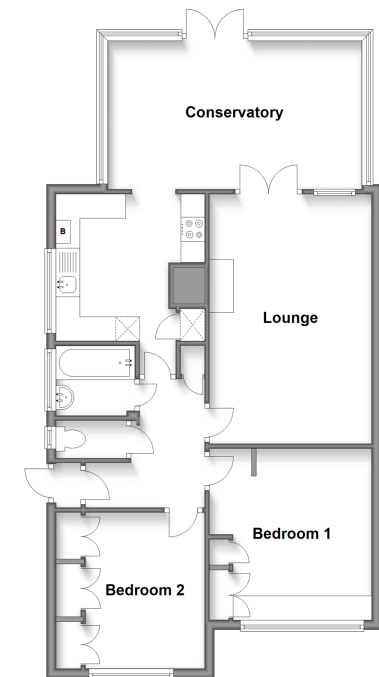
GROUND FLOOR

Hallway
Lounge
Kitchen: 10'0 x 9'10 (3.05m x 3.00m)
Conservatory: 17'3 x 10'3 (5.26m x 3.13m)
Bedroom 1: 11'4 x 11'1 (3.46m x 3.38m)
Bedroom 2: 11'5 x 8'2 (3.48m x 2.49m)
Bathroom

OUTSIDE

Rear Garden
Driveway

Ground Floor
Approx. 78.2 sq. metres (841.2 sq. feet)



Call Tonbridge - 01732 770755 ■ wardsofkent.co.uk

■ Legal advice should be taken to verify fixtures/fittings, planning, alterations and/or lease details

■ Appliances & services are untested, dimensions are approximate and floor plans are not to scale



14131588/20240207/MC/JW