



Guide Price
£650,000

Freehold

4x  3x  3x 

**Higham Lane,
Tonbridge, Kent, TN10**

OVER 60?

Secure this property
for up to **59% less!**



Video Tour available

Wards
Helping you move forwards



Main features

- **Extended and well presented family home**
- **Potential to adapt the current layout to suit your needs**
- **Large bright dual aspect lounge with patio doors to the garden**
- **Lovely views from the front of the property**
- **Walking distance to local amenities and in the catchment area for popular schools**

Accommodation

GROUND FLOOR

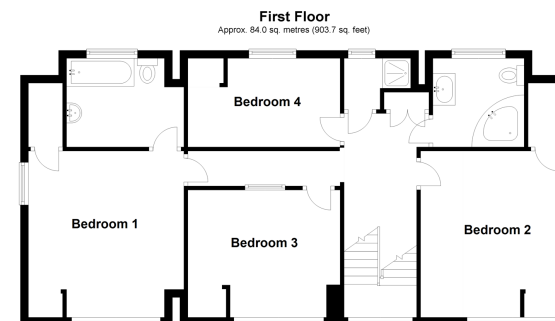
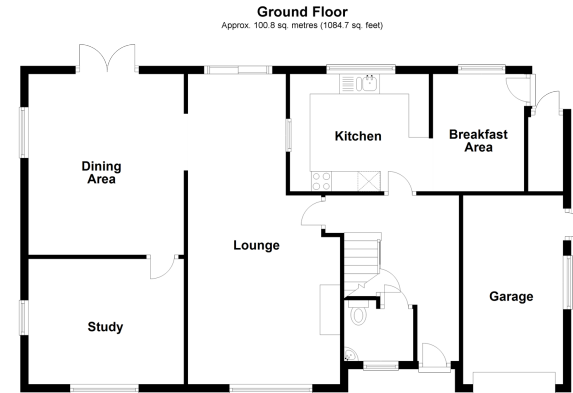
Hallway
Downstairs Cloakroom
Lounge: 26'0 x 12'4 (7.93m x 3.76m)
Dining Area: 14'10 x 12'8 (4.52m x 3.86m)
Kitchen: 11'3 x 9'4 (3.43m x 2.85m)
Breakfast Area: 9'4 x 7'5 (2.85m x 2.26m)
Study: 12'8 x 10'3 (3.86m x 3.13m)

FIRST FLOOR

Landing
Bedroom 1: 13'7 x 12'7 (4.14m x 3.84m)
En Suite Bathroom: 9'6 x 7'3 (2.90m x 2.21m)
Bedroom 2: 13'6 x 11'8 (4.12m x 3.56m)
Bedroom 3: 12'5 x 10'2 (3.79m x 3.10m)
Bedroom 4: 12'7 x 7'3 (3.84m x 2.21m)
Shower Room
Bathroom

OUTSIDE

Garage
Off Road Parking
Front & Rear Garden
Car Port



Call Tonbridge - 01732 770755 ■ wardsofkent.co.uk

■ Legal advice should be taken to verify fixtures/fittings, planning, alterations and/or lease details
■ Through a Homewise Home For Life Plan people aged 60+ can secure this property for up to 59% less, by purchasing a Lifetime Lease.

■ Appliances & services are untested, dimensions are approximate and floor plans are not to scale