



Price
£600,000

Freehold

3x  1x  2x 

**St. Marys Road,
Tonbridge, Kent, TN9**

OVER 60?

Secure this property
for up to **59% less!**

Wards
Helping you move forwards



Main features

- Well presented bay fronted family home with character features
- Large bright kitchen/breakfast room and separate dining room
- Easy to maintain rear garden with patio area and side access
- Located in an extremely sought after area of South Tonbridge
- Walking distance to the High Street and station

Accommodation

GROUND FLOOR

Hallway
 Lounge: 11'10 x 10'10 (3.61m x 3.30m)
 Dining Room: 12'4 x 9'6 (3.76m x 2.90m)
 Kitchen/Breakfast Room: 17'4 x 9'9 (5.29m x 2.97m)
 Utility Area: 6'1 x 4'9 (1.86m x 1.45m)

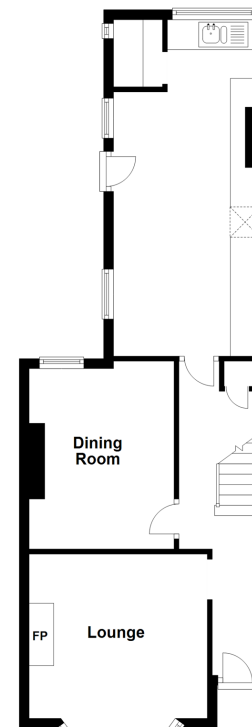
FIRST FLOOR

Landing
 Bedroom 1: 14'9 x 10'9 (4.50m x 3.28m)
 Bedroom 2: 12'9 x 9'10 (3.89m x 3.00m)
 Bedroom 3: 11'11 x 9'6 (3.63m x 2.90m)
 Bathroom: 9'0 x 6'5 (2.75m x 1.96m)

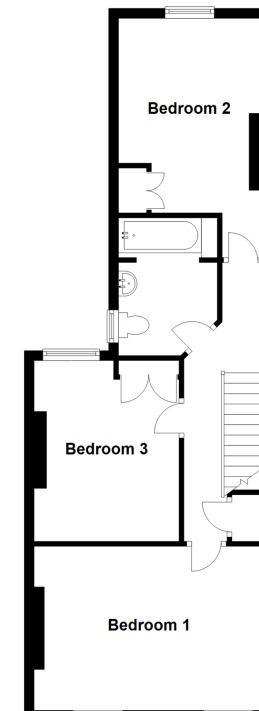
OUTSIDE

Rear Garden
 Off Road Parking

Ground Floor
 Approx. 53.9 sq. metres (580.2 sq. feet)



First Floor
 Approx. 53.4 sq. metres (574.5 sq. feet)



Call Tonbridge - 01732 770755 ■ wardsofkent.co.uk

■ Legal advice should be taken to verify fixtures/fittings, planning, alterations and/or lease details
 ■ Through a Homewise Home For Life Plan people aged 60+ can secure this property for up to 59% less, by purchasing a Lifetime Lease.

■ Appliances & services are untested, dimensions are approximate and floor plans are not to scale



14132837/20230427/MC/KA