



Guide Price
£200,000

Leasehold

1x  1x  1x 

Maylams Quay, Medway
Wharf Road, Tonbridge,
Kent, TN9

OVER 60?

Secure this property
for up to **59% less!**

Wards
Helping you move forwards



Main features

- Third floor apartment recently redecorated and in ready to move in condition
- Modern open plan kitchen/living area with built in appliances and large windows allowing plenty of light into the apartment
- Situated on the river with lovely walks on your doorstep
- Walking distance to the station and High Street
- Perfect for first time buyers and investors

Accommodation

THIRD FLOOR

Hallway

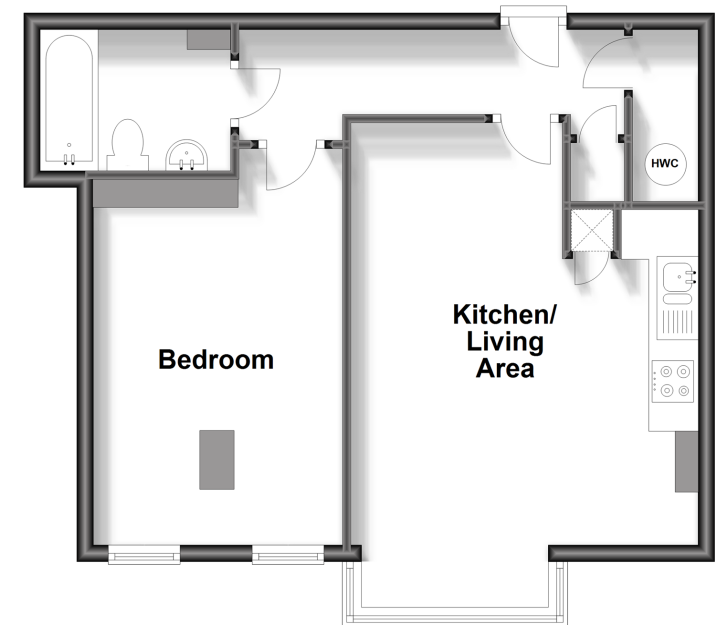
Kitchen/Living Area: 19'4 x 13'11 (5.90m x 4.24m) plus 5'4 x 9'11 (1.63m x 3.02m)

Bedroom: 13'0 x 9'8 (3.97m x 2.95m)

Bathroom: 7'6 x 5'6 (2.29m x 1.68m)

Third Floor

Approx. 47.1 sq. metres (507.5 sq. feet)



Call Tonbridge - 01732 770755 ■ wardsofkent.co.uk

■ Legal advice should be taken to verify fixtures/fittings, planning, alterations and/or lease details
 ■ Through a Homewise Home For Life Plan people aged 60+ can secure this property for up to 59% less, by purchasing a Lifetime Lease.

■ Appliances & services are untested, dimensions are approximate and floor plans are not to scale