



Price

£50,000

Leasehold

1x  1x  1x 

**Castle Court, Hadlow
Road, Tonbridge, Kent,
TN9**

Wards
Helping you move forwards



Main features

- Well presented ground floor retirement apartment for the over 65's
- Stunning landscaped gardens for residents to enjoy
- Communal sitting room/function room
- Guest suite and emergency call system
- Walking distance to the High Street

Accommodation

GROUND FLOOR

Hallway

Lounge: 17'10 x 10'8 (5.44m x 3.25m)

Kitchen: 9'6 x 7'1 (2.90m x 2.16m)

Bedroom: 14'11 x 10'0 (4.55m x 3.05m)

Bathroom: 9'6 x 6'9 (2.90m x 2.06m)

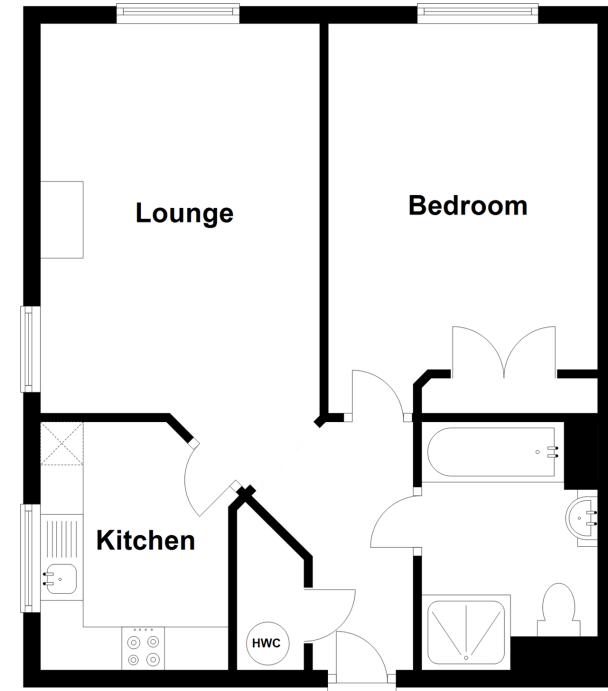
OUTSIDE

Allocated Parking

Communal Gardens

Ground Floor

Approx. 49.0 sq. metres (527.7 sq. feet)



Call Tonbridge - 01732 770755 ■ wardsofkent.co.uk

■ Legal advice should be taken to verify fixtures/fittings, planning, alterations and/or lease details

■ Appliances & services are untested, dimensions are approximate and floor plans are not to scale



14132976/20231102/MC/KA