



**Price**  
**£350,000**

**Freehold**

3x  1x  2x 

**Oakmead, Tonbridge,  
Kent, TN10**

**OVER 60?**

Secure this property  
for up to **59% less!**

*Wards*  
Helping you move forwards





## Main features

- **Fantastic family home located on a quiet residential road**
- **Bright sunny lounge with separate dining area**
- **Potential to adapt and improve the current layout**
- **Charming private rear garden**
- **Walking distance to local amenities, schools and parks**

## Accommodation

### GROUND FLOOR

Hallway  
Lounge: 14'0 x 10'3 (4.27m x 3.13m)  
Dining Area: 10'8 x 9'0 (3.25m x 2.75m)  
Kitchen: 9'10 x 9'1 (3.00m x 2.77m)  
Store

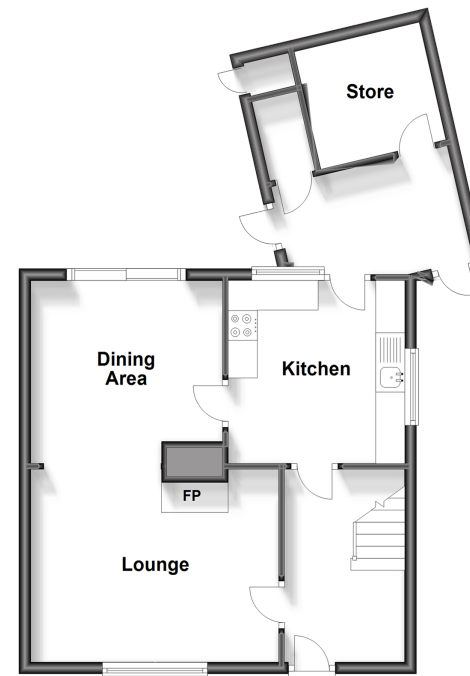
### FIRST FLOOR

Landing  
Bedroom 1: 11'0 x 10'2 (3.36m x 3.10m)  
Bedroom 2: 13'0 x 8'9 (3.97m x 2.67m)  
Bedroom 3: 9'9 x 7'5 (2.97m x 2.26m)  
Bathroom: 7'6 x 5'5 (2.29m x 1.65m)

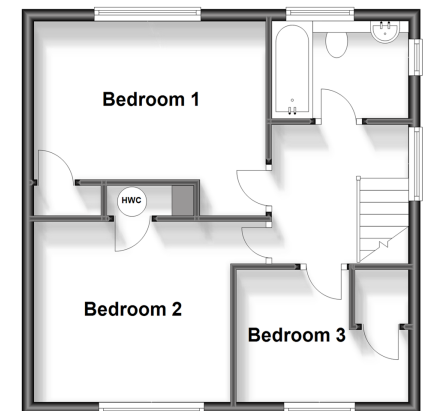
### OUTSIDE

Front & Rear Gardens  
Off Road Parking

**Ground Floor**  
Approx. 53.8 sq. metres (579.2 sq. feet)



**First Floor**  
Approx. 41.3 sq. metres (445.0 sq. feet)



**Call Tonbridge - 01732 770755 ■ [wardsofkent.co.uk](http://wardsofkent.co.uk)**

■ Legal advice should be taken to verify fixtures/fittings, planning, alterations and/or lease details  
■ Through a Homewise Home For Life Plan people aged 60+ can secure this property for up to 59% less, by purchasing a Lifetime Lease.

■ Appliances & services are untested, dimensions are approximate and floor plans are not to scale