



Price
£475,000

Freehold

3x  1x  2x 

**Shipbourne Road,
Tonbridge, Kent, TN10**

OVER 60?

Secure this property
for up to **59% less!**

Wards
Helping you move forwards



Main features

- Well presented family home in North Tonbridge with scope to extend - subject to planning
- Modern fitted kitchen with ample worktop space and separate utility room
- Off road parking and large tandem garage
- Sunny rear garden with gorgeous summerhouse - a lovely place to relax with a good book
- Walking distance to the High Street and in the catchment area for fantastic schools

Accommodation

GROUND FLOOR

Hallway
 Lounge: 13'8 x 12'7 (4.17m x 3.84m)
 Dining Room: 17'7 x 9'11 (5.36m x 3.02m)
 Kitchen: 11'0 x 10'10 (3.36m x 3.30m)
 Utility Room: 7'7 x 5'2 (2.31m x 1.58m)
 Downstairs Cloakroom

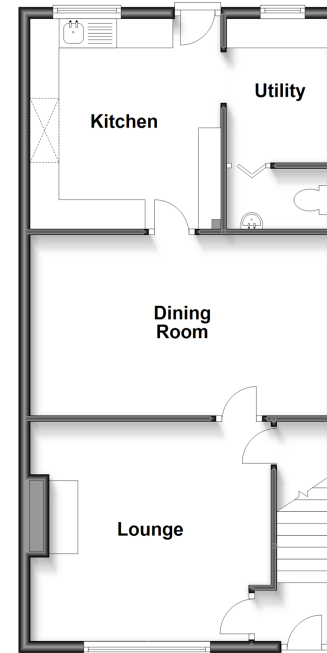
FIRST FLOOR

Landing
 Bedroom 1: 13'8 x 11'10 (4.17m x 3.61m)
 Bedroom 2: 11'1 x 10'3 (3.38m x 3.13m)
 Bedroom 3: 10'5 x 7'9 (3.18m x 2.36m)
 Bathroom: 7'9 x 5'10 (2.36m x 1.78m)

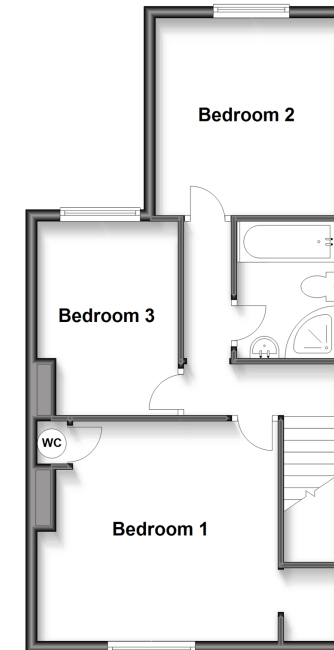
OUTSIDE

Rear Garden
 Garage
 Off Road Parking

Ground Floor
 Approx. 55.3 sq. metres (595.7 sq. feet)



First Floor
 Approx. 48.2 sq. metres (519.1 sq. feet)



Call Tonbridge - 01732 770755 ■ wardsofkent.co.uk

■ Legal advice should be taken to verify fixtures/fittings, planning, alterations and/or lease details
 ■ Through a Homewise Home For Life Plan people aged 60+ can secure this property for up to 59% less, by purchasing a Lifetime Lease.

■ Appliances & services are untested, dimensions are approximate and floor plans are not to scale



14133302/20230426/MC/AR