

OVER 60?

Secure this property
for up to **59% less!**



Price

£375,000

Freehold

2x  1x  1x 

Toby Gardens, Hadlow, Tonbridge, Kent,
TN11

Wards
Helping you move forwards



Main features

- Well loved family home situated on a corner plot
- Scope to extend (subject to planning)
- Wonderful sunny rear garden with mature shrubs and small patio area
- Ample parking with both a driveway and a garage
- Popular village location, nestled away in a quiet cul-de-sac just a few minutes walk to local amenities

Accommodation

GROUND FLOOR

Porch

Lounge: 14'3 x 11'11 (4.35m x 3.63m)

Kitchen: 11'10 x 8'1 (3.61m x 2.47m)

Conservatory: 11'10 x 10'0 (3.61m x 3.05m)

FIRST FLOOR

Landing

Bedroom 1: 12'0 x 10'0 (3.66m x 3.05m)

Bedroom 2: 12'0 x 8'1 (3.66m x 2.47m)

Bathroom

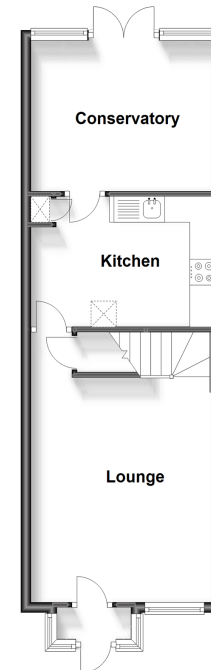
OUTSIDE

Front & Rear Gardens

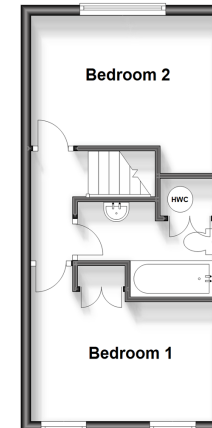
Garage

Driveway

Ground Floor
Approx. 40.5 sq. metres (436.4 sq. feet)



First Floor
Approx. 28.5 sq. metres (307.2 sq. feet)



Call Tonbridge - 01732 770755 ■ wardsofkent.co.uk

■ Legal advice should be taken to verify fixtures/fittings, planning, alterations and/or lease details
■ Through a Homewise Home For Life Plan people aged 60+ can secure this property for up to 59% less, by purchasing a Lifetime Lease.

■ Appliances & services are untested, dimensions are approximate and floor plans are not to scale



14133340/20230623/MC/AR