



OVER 60?

Secure this property
for up to **59% less!**



Video Tour available

Price

£400,000

Freehold

3x  1x  2x 

**Hectorage Road,
Tonbridge, Kent, TN9**

Wards
Helping you move forwards



Main features

- Beautifully presented, bay fronted family home in sought after South Tonbridge
- Fantastic contemporary kitchen with integrated appliances
- Good sized lounge and separate dining room offering ample space for the whole family
- Charming rear garden with patio area, side access and off road parking
- Walking distance to the station, High Street and popular schools

Accommodation

GROUND FLOOR

Hallway

Lounge: 12'10 x 10'8 (3.91m x 3.25m)

Dining Room: 12'10 x 10'10 (3.91m x 3.30m)

Kitchen: 12'5 x 6'10 (3.79m x 2.08m)

Bathroom

FIRST FLOOR

Landing

Bedroom 1: 12'10 x 10'8 (3.91m x 3.25m)

Bedroom 2: 10'9 x 9'2 (3.28m x 2.80m)

Bedroom 3: 9'2 x 7'0 (2.80m x 2.14m)

En Suite Toilet

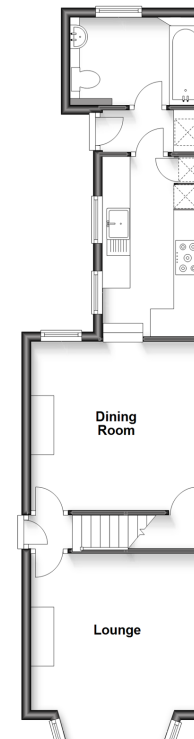
OUTSIDE

Rear Garden

Off Road Parking

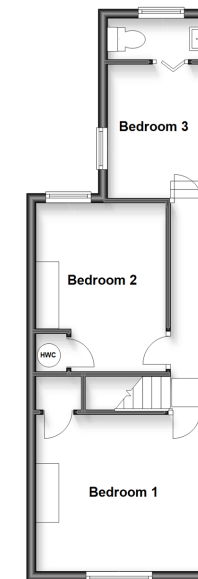
Split Level Ground Floor

Approx. 46.6 sq. metres (501.9 sq. feet)



Split Level First Floor

Approx. 37.3 sq. metres (401.9 sq. feet)



Call Tonbridge - 01732 770755 ■ wardsofkent.co.uk

■ Legal advice should be taken to verify fixtures/fittings, planning, alterations and/or lease details
 ■ Through a Homewise Home For Life Plan people aged 60+ can secure this property for up to 59% less, by purchasing a Lifetime Lease.

■ Appliances & services are untested, dimensions are approximate and floor plans are not to scale