



**Price**  
**£600,000**

**Freehold**

4x  3x  2x 

**Greentrees Avenue,  
Tonbridge, Kent, TN10**

**OVER 60?**

Secure this property  
for up to **59% less!**



**Video Tour available**

**Wards**  
Helping you move forwards





## Main features

- **Spacious family home situated on a generous corner plot**
- **Large summerhouse - perfect for a home office, games room or a gym**
- **Large sunny private rear garden with raised patio area**
- **Potential to adapt the current layout to suit your needs**
- **Great location, close to good schools for all ages, local shops and bus routes**

## Accommodation

### GROUND FLOOR

Hallway  
 Lounge: 15'1 x 11'5 into bay (4.60m x 3.48m)  
 Kitchen: 11'10 x 10'5 (3.61m x 3.18m)  
 Dining Area: 19'10 x 10'1 (6.05m x 3.08m)  
 Sun Room: 11'6 x 8'6 (3.51m x 2.59m)  
 Bedroom 2: 11'10 x 9'11 into fitted wardrobes (3.61m x 3.02m)  
 Bedroom 3: 13'11 x 8'7 (4.24m x 2.62m)  
 Shower Room: 6'1 x 5'8 (1.86m x 1.73m)

### FIRST FLOOR

Landing  
 Bedroom 1: 12'2 x 11'0 (3.71m x 3.36m)  
 En Suite Shower Room  
 Bedroom 4: 11'7 x 8'2 (3.53m x 2.49m)  
 Bathroom

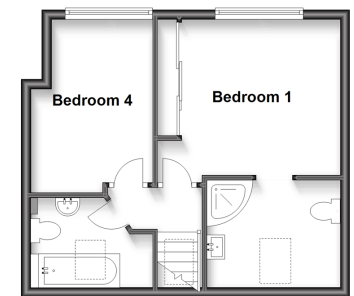
### OUTSIDE

Front & Rear Gardens  
 Summerhouse  
 Driveway  
 Shed

**Ground Floor**  
 Approx. 97.3 sq. metres (1047.4 sq. feet)



**First Floor**  
 Approx. 35.0 sq. metres (376.9 sq. feet)



**Call Tonbridge - 01732 770755 ■ [wardsofkent.co.uk](http://wardsofkent.co.uk)**

■ Legal advice should be taken to verify fixtures/fittings, planning, alterations and/or lease details  
 ■ Through a Homewise Home For Life Plan people aged 60+ can secure this property for up to 59% less, by purchasing a Lifetime Lease.

■ Appliances & services are untested, dimensions are approximate and floor plans are not to scale