



OVER 60?

Secure this property
for up to **59% less!**



Video Tour available

Price

£375,000

Freehold

3x  1x  1x 

**Cherwell Close,
Tonbridge, Kent, TN10**

Wards
Helping you move forwards



Main features

- Great sized family home in need of slight modernisation throughout
- Large bright lounge and separate dining area
- Easy to maintain rear garden with off road parking to the rear
- Walking distance to local amenities
- Within the catchment area for sought after schools

Accommodation

GROUND FLOOR

Porch
Lounge: 14'8 x 14'8 (4.47m x 4.47m)
Dining Area: 9'8 x 7'8 (2.95m x 2.34m)
Kitchen: 9'11 x 6'9 (3.02m x 2.06m)

FIRST FLOOR

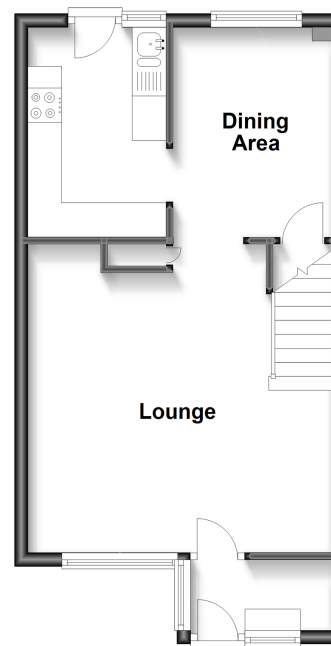
Landing
Bedroom 1: 13'7 x 8'4 (4.14m x 2.54m)
Bedroom 2: 9'3 x 8'4 (2.82m x 2.54m)
Bedroom 3: 7'3 x 6'2 (2.21m x 1.88m)
Bathroom

OUTSIDE

Front & Rear Gardens
Off Road Parking

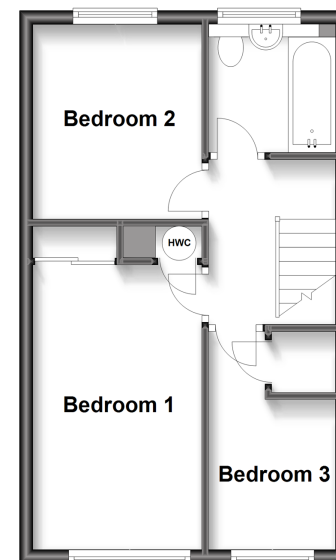
Ground Floor

Approx. 36.7 sq. metres (394.5 sq. feet)



First Floor

Approx. 34.3 sq. metres (369.2 sq. feet)



Call Tonbridge - 01732 770755 ■ wardsofkent.co.uk

■ Legal advice should be taken to verify fixtures/fittings, planning, alterations and/or lease details
■ Through a Homewise Home For Life Plan people aged 60+ can secure this property for up to 59% less, by purchasing a Lifetime Lease.

■ Appliances & services are untested, dimensions are approximate and floor plans are not to scale