



Price

£200,000

Leasehold

2x  1x  1x 

**Merryfield Court,
Waterloo Road,
Tonbridge, Kent, TN9**

Wards
Helping you move forwards



Main features

- Well presented second floor retirement apartment
- Freshly re-painted and new carpets fitted
- Residents parking, secure telephone entry system and lift access
- Lovely communal areas for residents to enjoy and an onsite warden
- Located in the heart of Tonbridge just a short walk to the High Street, station bus links and more

Accommodation

SECOND FLOOR

Hallway

Lounge/Diner: 15'5 x 11'2 (4.70m x 3.41m)

Kitchen: 7'4 x 7'0 (2.24m x 2.14m)

Bedroom 1: 15'9 x 9'3 (4.80m x 2.82m)

En Suite Shower Room

Bedroom 2: 16'4 x 8'0 (4.98m x 2.44m)

Bathroom: 6'8 x 5'6 (2.03m x 1.68m)

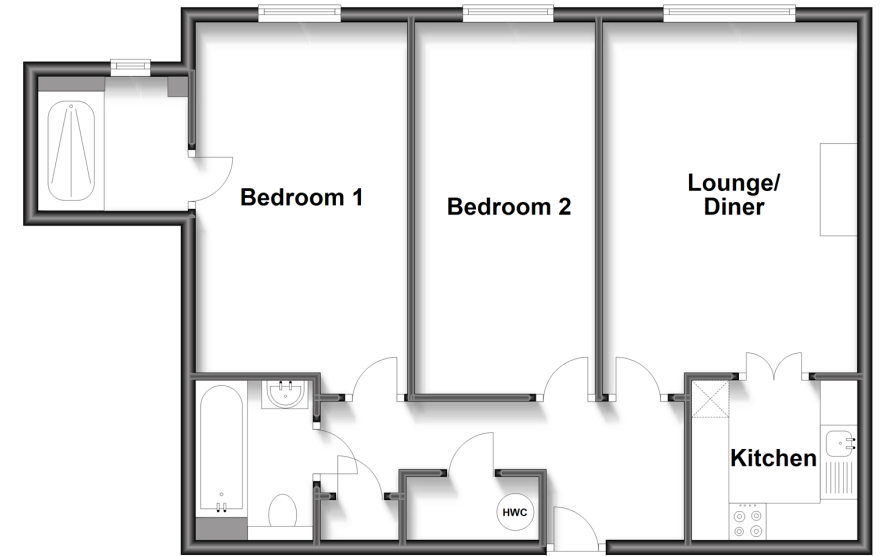
OUTSIDE

Communal Gardens

Residents Parking

Second Floor

Approx. 66.3 sq. metres (713.2 sq. feet)



Call Tonbridge - 01732 770755 ■ wardsof Kent.co.uk

■ Legal advice should be taken to verify fixtures/fittings, planning, alterations and/or lease details

■ Appliances & services are untested, dimensions are approximate and floor plans are not to scale



14133430/20230426/MC/AR