



Price

£120,000

Leasehold

1x  1x  1x 

**Rosewell House,
Tudeley Lane,
Tonbridge, Kent, TN11**

Wards
Helping you move forwards



Main features

- **Spacious ground floor apartment for the over 55's**
- **Large bright lounge and modern fitted kitchen**
- **Housing staff on site 24/7 along with secure entry system**
- **Restaurant, garden, activity room and parking all on site**
- **Just a mile in Tonbridge Town Centre**

Accommodation

GROUND FLOOR

Hallway

Lounge: 16'6 x 12'10 (5.03m x 3.91m)

Kitchen: 8'8 x 7'2 (2.64m x 2.19m)

Bedroom: 15'1 x 11'8 (4.60m x 3.56m)

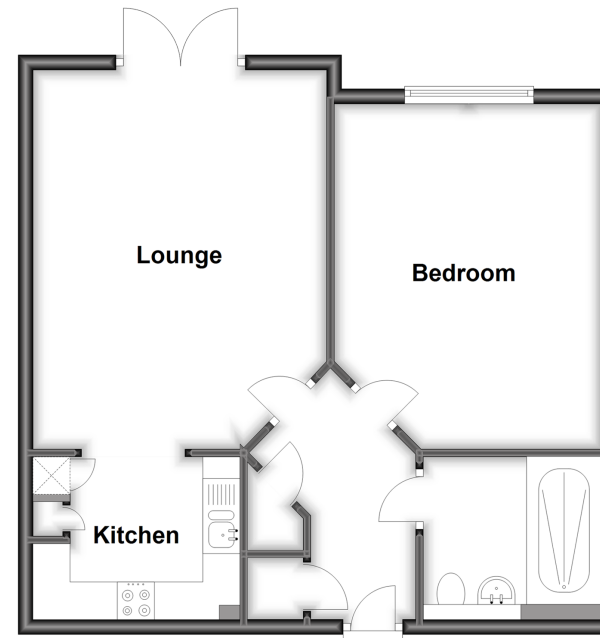
Bathroom: 7'7 x 7'3 (2.31m x 2.21m)

OUTSIDE

Allocated Parking

Ground Floor

Approx. 54.4 sq. metres (585.4 sq. feet)



Call Tonbridge - 01732 770755 ■ wardsofkent.co.uk

■ Legal advice should be taken to verify fixtures/fittings, planning, alterations and/or lease details

■ Appliances & services are untested, dimensions are approximate and floor plans are not to scale



14133500/20240127/HG/KA