



Guide Price
£900,000

Freehold

4x  2x  3x 

**Park Cottages, Hampton
Park Road, Hadlow,
Tonbridge, Kent, TN11**

OVER 60?

Secure this property
for up to **59% less!**

Wards
Helping you move forwards



Main features

- **Stunning character cottage benefits from far reaching views over the surrounding countryside**
- **Bright and spacious dual aspect lounge with attractive period fireplace**
- **Stylish kitchen with bi-folding doors opening on to the rear terrace**
- **Wonderful rear garden with ample space for alfresco dining**
- **Semi rural location with up to 1000mbps fibre optic internet, all within easy reach of Tonbridge, Sevenoaks and Hadlow**

Accommodation

GROUND FLOOR

Entrance Hallway
Cloakroom
Lounge: 21'11 x 14'9 (6.68m x 4.50m)
Family Room: 11'7 x 10'11 (3.53m x 3.33m)
Dining Area: 14'9 x 10'3 (4.50m x 3.13m)
Kitchen : 18'7 x 8'10 (5.67m x 2.69m)

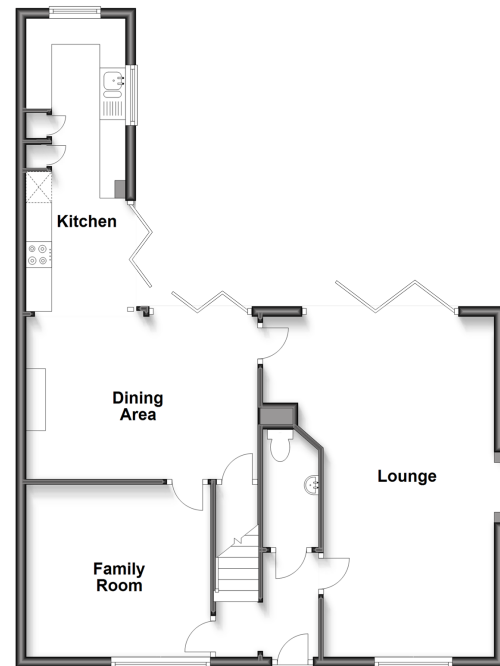
FIRST FLOOR

Landing
Bedroom 1: 13'3 x 10'2 (4.04m x 3.10m)
En Suite Shower Room
Bedroom 2: 13'11 x 10'2 (4.24m x 3.10m)
Bedroom 3: 14'11 x 8'6 (4.55m x 2.59m)
Bedroom 4: 10'7 x 7'6 (3.23m x 2.29m)
Bathroom

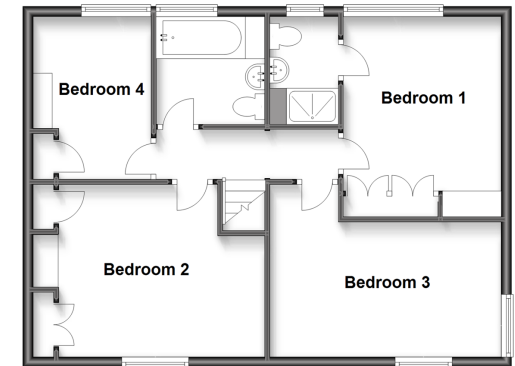
OUTSIDE

Driveway
Shed
Rear Garden

Ground Floor
Approx. 71.3 sq. metres (767.5 sq. feet)



First Floor
Approx. 61.2 sq. metres (658.3 sq. feet)



Call Tonbridge - 01732 770755 ■ wardsofkent.co.uk

■ Legal advice should be taken to verify fixtures/fittings, planning, alterations and/or lease details
■ Through a Homewise Home For Life Plan people aged 60+ can secure this property for up to 59% less, by purchasing a Lifetime Lease.

■ Appliances & services are untested, dimensions are approximate and floor plans are not to scale