



**OVER 60?**

Secure this property  
for up to **59% less!**

**Price**

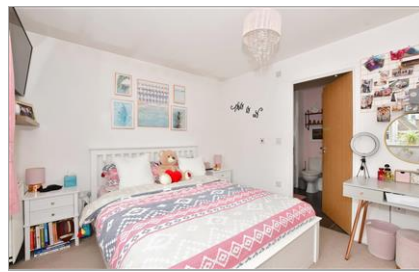
**£250,000**

**Leasehold**

1x  1x  1x 

**Taylor Close, Tonbridge,  
Kent, TN9**

*Wards*  
Helping you move forwards



## Main features

- Well presented second floor apartment in a popular development
- Bright and spacious open plan living/kitchen area and allocated parking
- Walking distance to the High Street and station
- Great access to the A21/M25 and local bus routes
- Tonbridge offers an excellent range of retail and leisure activities with many High Street stores, coffee shops and restaurants

## Accommodation

### SECOND FLOOR

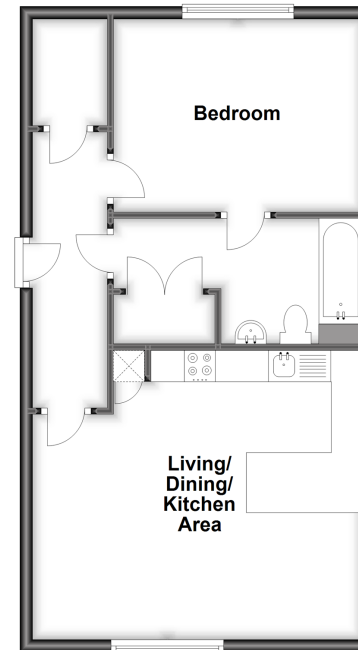
Hallway  
 Living/Dining/Kitchen Area: 17'3 x 15'5 (5.26m x 4.70m)  
 Utility Cupboard  
 Bedroom 1: 13'1 x 10'0 (3.99m x 3.05m)  
 Walk in Wardrobe  
 Bathroom

### OUTSIDE

Allocated Parking

### Second Floor

Approx. 52.3 sq. metres (563.1 sq. feet)



**Call Tonbridge - 01732 770755 ■ [wardsofkent.co.uk](http://wardsofkent.co.uk)**

■ Legal advice should be taken to verify fixtures/fittings, planning, alterations and/or lease details  
 ■ Through a Homewise Home For Life Plan people aged 60+ can secure this property for up to 59% less, by purchasing a Lifetime Lease.

■ Appliances & services are untested, dimensions are approximate and floor plans are not to scale