



Price

£180,000

Leasehold

2x  1x  1x 

**Merryfield Court,
Waterloo Road,
Tonbridge, Kent, TN9**

Wards
Helping you move forwards



Main features

- **Bright and spacious ground floor apartment with direct access to the car park**
- **Situated close to the communal lounge, laundry room and beautiful communal gardens**
- **Weekly social activities for residents such as coffee mornings and exercise classes**
- **Resident management staff and Careline alarm service**
- **Walking distance to the High Street and station**

Accommodation

GROUND FLOOR

Hallway

Lounge: 22'8 x 10'4 (6.91m x 3.15m)

Kitchen: 7'7 x 7'7 (2.31m x 2.31m)

Bedroom 1: 16'7 x 9'5 (5.06m x 2.87m)

Bedroom 2: 16'7 x 8'9 (5.06m x 2.67m)

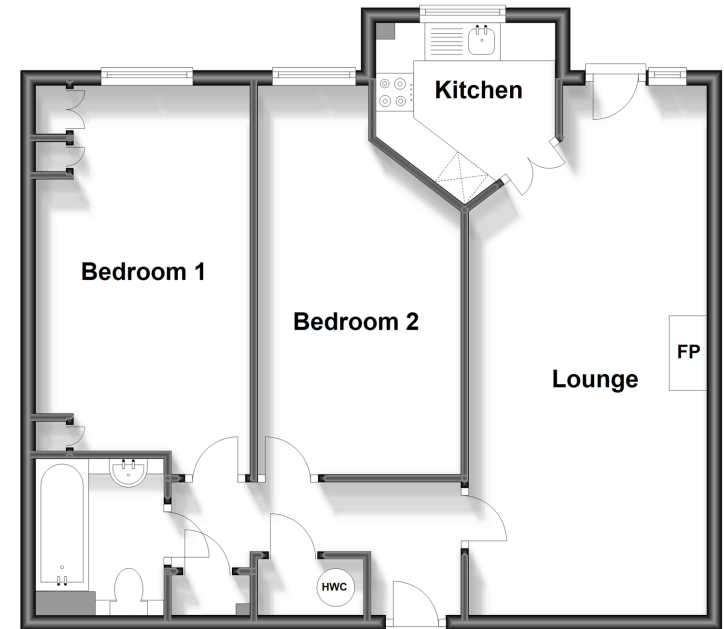
Bathroom: 6'8 x 5'5 (2.03m x 1.65m)

OUTSIDE

Communal Gardens

Allocated Parking

Ground Floor
Approx. 64.1 sq. metres (690.3 sq. feet)



Call Tonbridge - 01732 770755 ■ wardsofkent.co.uk

■ Legal advice should be taken to verify fixtures/fittings, planning, alterations and/or lease details

■ Appliances & services are untested, dimensions are approximate and floor plans are not to scale



14133579/20240305/JD11/KA