



Guide Price
£525,000

Freehold

3x  1x  1x 

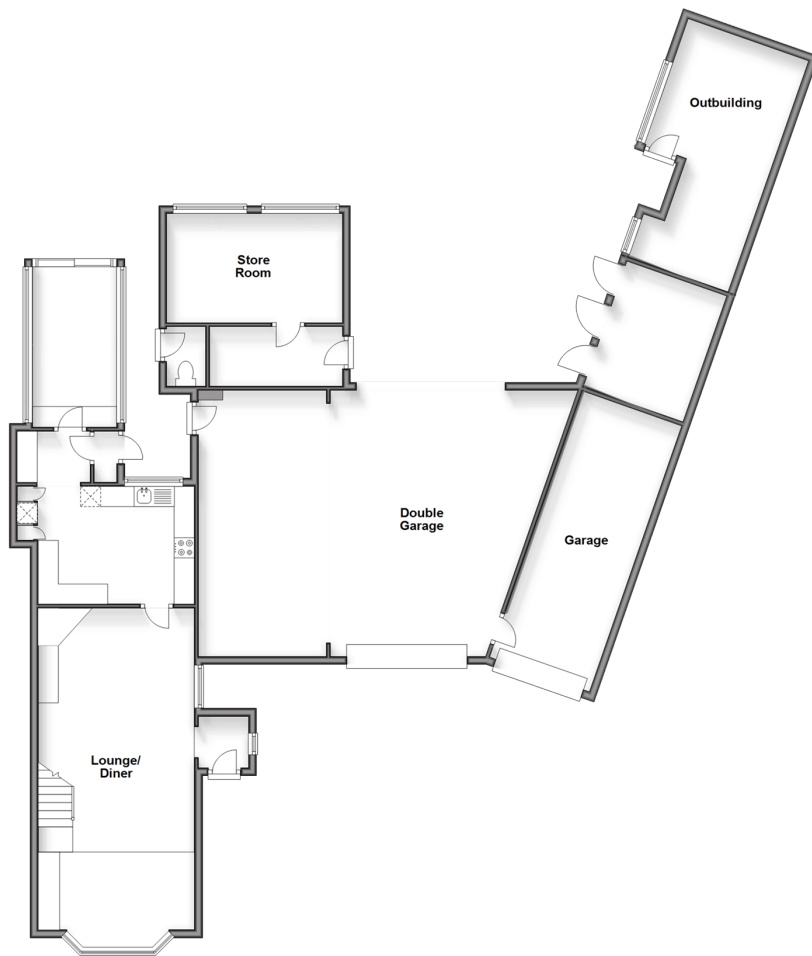
**The Freehold, Hadlow,
Tonbridge, Kent, TN11**

OVER 60?

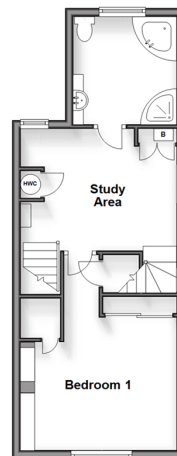
Secure this property
for up to **59% less!**

Wards
Helping you move forwards

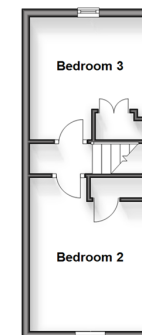
Ground Floor
Approx. 176.6 sq. metres (1901.0 sq. feet)



First Floor
Approx. 38.1 sq. metres (410.0 sq. feet)



Second Floor
Approx. 23.2 sq. metres (249.2 sq. feet)



Accommodation

GROUND FLOOR

Hallway
Lounge/Diner: 29'2 x 12'6 (8.90m x 3.81m)
Kitchen: (L-shaped) 13'9 x 12'6 (4.19m x 3.81m) plus 5'9 x 8'2 (1.75m x 2.49m)
Conservatory: 12'8 x 7'4 (3.86m x 2.24m)
Downstairs Cloakroom
Store Room

FIRST FLOOR

Landing
Study Area: 11'8 x 9'9 (3.56m x 2.97m)
Bedroom 1: 13'6 x 10'5 (4.12m x 3.18m)
Bathroom

SECOND FLOOR

Landing
Bedroom 2: 12'9 x 9'8 (3.89m x 2.95m)
Bedroom 3: 9'8 x 7'4 (2.95m x 2.24m)

OUTSIDE

Double Garage
Garage
Outbuilding
Driveway
Rear Garden



Main features

- **CHAIN FREE!**
- **Spacious family home with plenty of potential**
- **Substantial plot with numerous outbuildings**
- **Off road parking and triple garage**
- **Situated within the desirable quite village of Hadlow**



Nearest Schools

Primary Schools: Hadlow School 0.6 miles, St Margaret Clitherow Catholic Primary 2.7 miles, East Peckham Primary 2.8 miles

Secondary Schools: Ridge View School 3.6 miles, Sackville



Transport Information

Train Stations: Tonbridge 4.5 miles, Leigh 5.4 miles, Borough Green & Wrotham 5.7 miles



Address

The Freehold, Hadlow, Tonbridge, Kent, TN11



Directions

For directions to this property please contact us.



Call Tonbridge Branch 01732 770755 ■ wardsofkent.co.uk



- Legal advice should be taken to verify fixtures/fittings, planning, alterations and/or lease details
- Appliances & services are untested, dimensions are approximate and floor plans are not to scale
- Through a Homewise Home For Life Plan people aged 60+ can secure this property for up to 59% less, by purchasing a Lifetime Lease.



14133591/20240220/JD11/GA