



**Guide Price**  
**£220,000**

**Leasehold**

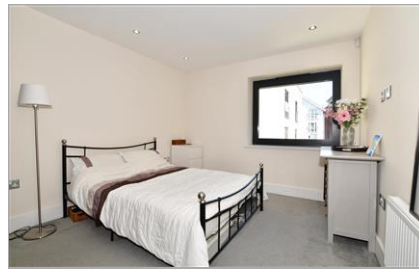
1x  1x  1x 

**Ronnies Wharf, Lyons  
Crescent, Tonbridge,  
Kent, TN9**

**OVER 60?**

Secure this property  
for up to **59% less!**

*Wards*  
Helping you move forwards



## Main features

- Beautifully presented first floor apartment in sought after development
- Well maintained block with lift access
- Light and spacious throughout with plenty of storage
- High spec kitchen, complete with integrated Bosch appliances
- Town centre location - close to shops, restaurants, bars, cafes and the main line station

## Accommodation

### FIRST FLOOR

#### Hallway

Kitchen/Dining/Lounge: 27'9 x 10'0 (8.46m x 3.05m)

Bedroom: 12'1 x 10'3 (3.69m x 3.13m)

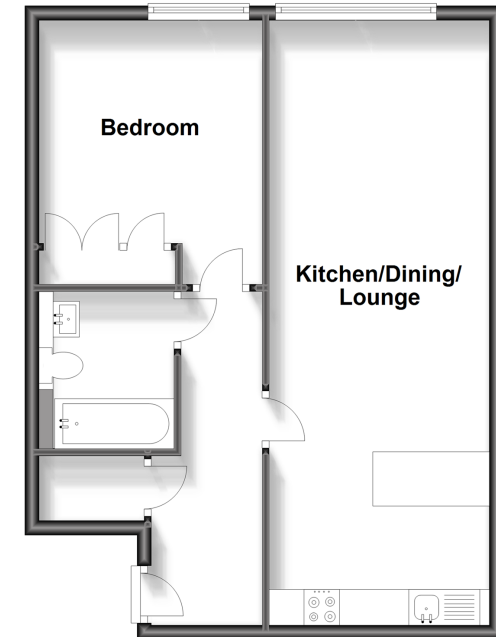
Bathroom: 7'2 x 5'6 (2.19m x 1.68m)

### OUTSIDE

Communal Garden

### First Floor

Approx. 51.3 sq. metres (552.5 sq. feet)



**Call Tonbridge - 01732 770755 ■ [wardsofkent.co.uk](http://wardsofkent.co.uk)**

■ Legal advice should be taken to verify fixtures/fittings, planning, alterations and/or lease details  
 ■ Through a Homewise Home For Life Plan people aged 60+ can secure this property for up to 59% less, by purchasing a Lifetime Lease.

■ Appliances & services are untested, dimensions are approximate and floor plans are not to scale



14133607/20230803/JD11/AR