



**Guide Price**  
**£270,000**

**Share of  
Freehold**

2x  2x  1x 

**Pembury Road,  
Tonbridge, Kent, TN9**

**OVER 60?**

Secure this property  
for up to **59% less!**

*Wards*  
Helping you move forwards





## Main features

- Bright and spacious second floor apartment in popular location
- Great sized lounge with seperate kitchen
- Communal garden and allocated parking
- Walking distance to the High Street and station
- Fantastic purchase for first time buyers and investors

## Accommodation

### SECOND FLOOR

#### Hallway

Lounge: 15'8 x 13'10 (4.78m x 4.22m)

Kitchen: 10'5 x 9'4 (3.18m x 2.85m)

Bedroom 1: 13'0 x 10'5 (3.97m x 3.18m)

En Suite Bathroom

Bedroom 2: 12'9 x 6'9 (3.89m x 2.06m)

Shower Room

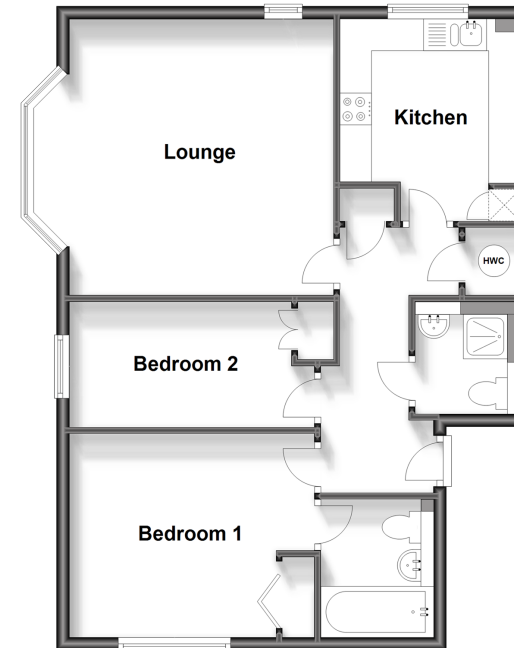
### OUTSIDE

Communal Garden

Allocated Parking

### Second Floor

Approx. 65.3 sq. metres (702.9 sq. feet)



**Call Tonbridge - 01732 770755 ■ [wardsofkent.co.uk](http://wardsofkent.co.uk)**

■ Legal advice should be taken to verify fixtures/fittings, planning, alterations and/or lease details  
 ■ Through a Homewise Home For Life Plan people aged 60+ can secure this property for up to 59% less, by purchasing a Lifetime Lease.

■ Appliances & services are untested, dimensions are approximate and floor plans are not to scale