



OVER 60?

Secure this property
for up to **59% less!**

Price

£450,000

Freehold

2x  1x  1x 

**Cherry Grove,
Tonbridge, Kent, TN10**

Wards
Helping you move forwards



Main features

- Spacious family home on a popular residential road
- Potential to extend - subject to planning permission
- Good sized lounge leading onto a bright sunny conservatory
- Large front & rear gardens, detached garage and off road parking
- Walking distance to local amenities, schools and park

Accommodation

GROUND FLOOR

Hallway

Lounge: 16'9 x 11'1 (5.11m x 3.38m)

Kitchen: 9'9 x 8'3 (2.97m x 2.52m)

Conservatory: 18'2 x 7'3 (5.54m x 2.21m)

Wet Room: 7'3 x 5'4 (2.21m x 1.63m)

Bedroom 1: 11'7 x 11'6 (3.53m x 3.51m)

Bedroom 2: 10'5 x 10'2 (3.18m x 3.10m)

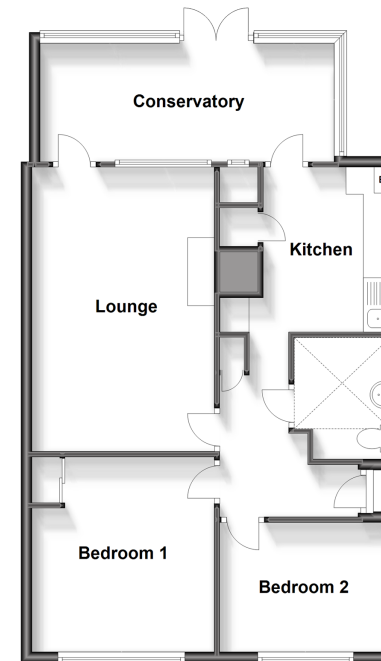
OUTSIDE

Front & Rear Gardens

Garage

Off Road Parking

Ground Floor
Approx. 71.4 sq. metres (768.8 sq. feet)



Call Tonbridge - 01732 770755 ■ wardsofkent.co.uk

■ Legal advice should be taken to verify fixtures/fittings, planning, alterations and/or lease details
■ Through a Homewise Home For Life Plan people aged 60+ can secure this property for up to 59% less, by purchasing a Lifetime Lease.

■ Appliances & services are untested, dimensions are approximate and floor plans are not to scale