



Guide Price
£690,000

Freehold

4x  2x  2x 

**Rowan Shaw, Tonbridge,
Kent, TN10**

OVER 60?

Secure this property
for up to **59% less!**

Wards
Helping you move forwards



Main features

- **Fantastic family home in need of slight modernisation**
- **Potential to extend and create your dream home - subject to planning**
- **Bright spacious lounge with separate dining area**
- **Charming private rear garden with patio area**
- **Sought after location with local amenities and popular schools all within walking distance**

Accommodation

GROUND FLOOR

Hallway

Lounge: 16'7 x 11'9 (5.06m x 3.58m)

Dining Room: 13'4 x 8'9 (4.07m x 2.67m)

Kitchen: 12'8 x 8'7 (3.86m x 2.62m)

Downstairs Shower Room

FIRST FLOOR

Landing

Bedroom 1: 13'4 x 12'9 (4.07m x 3.89m)

Bedroom 2: 12'8 x 12'2 (3.86m x 3.71m)

Bedroom 3: 12'3 x 9'5 (3.74m x 2.87m)

Bedroom 4: 8'9 x 7'9 (2.67m x 2.36m)

Bathroom

OUTSIDE

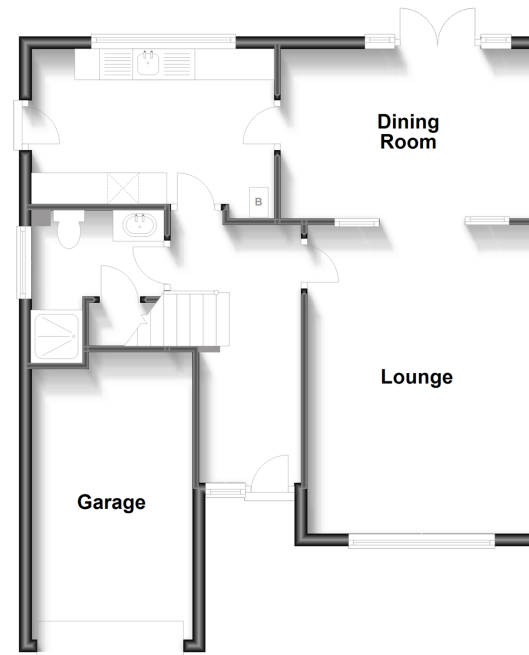
Front & Rear Gardens

Garage

Off Road Parking

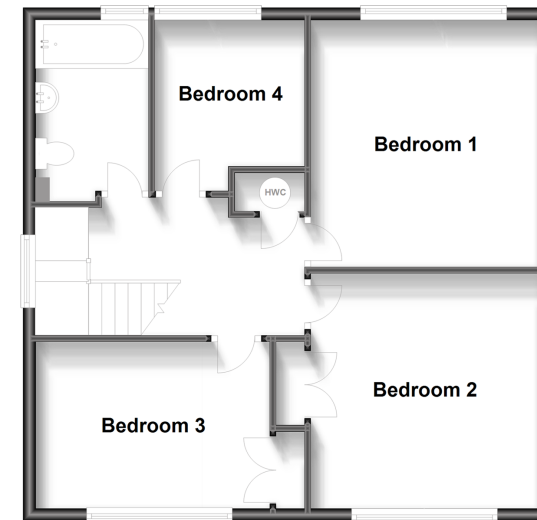
Ground Floor

Approx. 66.1 sq. metres (711.3 sq. feet)



First Floor

Approx. 63.6 sq. metres (685.1 sq. feet)



Call Tonbridge - 01732 770755 ■ wardsofkent.co.uk

■ Legal advice should be taken to verify fixtures/fittings, planning, alterations and/or lease details
 ■ Through a Homewise Home For Life Plan people aged 60+ can secure this property for up to 59% less, by purchasing a Lifetime Lease.

■ Appliances & services are untested, dimensions are approximate and floor plans are not to scale



14133651/20231025/JW/KA