



OVER 60?

Secure this property
for up to **59% less!**

Price

£725,000

Freehold

4x  2x  3x 

**Carpenters Lane,
Hadlow, Tonbridge,
Kent, TN11**

Wards
Helping you move forwards



Main features

- Beautifully presented family home in the popular village of Hadlow
- Stunning contemporary fitted kitchen with integrated appliances
- Versatile accommodation offering you the flexibility to adapt the layout to suit your needs
- Easy to maintain rear garden and off road parking to the front
- Walking distance to local amenities, schools, Hadlow Collage and countryside walks

Accommodation

GROUND FLOOR

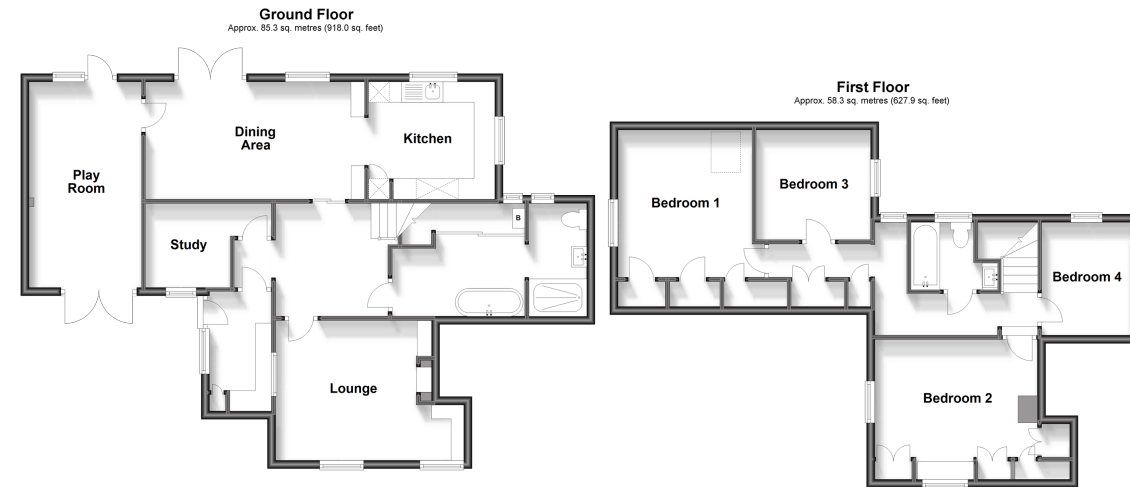
Porch
Hallway
Study: 11'6 x 6'8 (3.51m x 2.03m)
Downstairs Bathroom: 10'5 x 6'3 (3.18m x 1.91m)
Lounge: 15'1 x 11'7 (4.60m x 3.53m)
Kitchen: 10'3 x 9'5 (3.13m x 2.87m)
Dining Area: 16'2 x 9'4 (4.93m x 2.85m)
Playroom: 16'4 x 9'2 (4.98m x 2.80m)

FIRST FLOOR

Landing
Bedroom 1: 12'9 x 11'6 (3.89m x 3.51m)
Bedroom 2: 11'7 x 9'5 (3.53m x 2.87m)
Bedroom 3: 9'10 x 8'7 (3.00m x 2.62m)
Bedroom 4: 9'7 x 6'8 (2.92m x 2.03m)
Bathroom

OUTSIDE

Off Road Parking
Front & Rear Gardens



Call Tonbridge - 01732 770755 ■ wardsofkent.co.uk

■ Legal advice should be taken to verify fixtures/fittings, planning, alterations and/or lease details
■ Through a Homewise Home For Life Plan people aged 60+ can secure this property for up to 59% less, by purchasing a Lifetime Lease.

■ Appliances & services are untested, dimensions are approximate and floor plans are not to scale