



Guide Price
£465,000

Freehold

3x  1x  2x 

**Ashden Walk,
Tonbridge, Kent, TN10**

OVER 60?

Secure this property
for up to **59% less!**

Wards
Helping you move forwards



Main features

- Well presented and extended Gough Cooper style property
- Potential to adapt the current layout to create a large kitchen/diner
- Spacious lounge opening into the dining area
- Good sized private rear garden with a patio area Sought after location with local shops and excellent schools within walking distance

Accommodation

GROUND FLOOR

Hallway

Lounge: 15'8 x 12'6 (4.78m x 3.81m)

Dining Area: 10'2 x 10'1 (3.10m x 3.08m)

Family Area: 9'9 x 9'5 (2.97m x 2.87m)

Kitchen: 9'4 x 8'1 (2.85m x 2.47m)

Breakfast Area: 7'11 x 7'9 (2.41m x 2.36m)

FIRST FLOOR

Landing

Bedroom 1: 12'9 x 10'6 (3.89m x 3.20m)

Bedroom 2: 10'7 x 9'9 (3.23m x 2.97m)

Bedroom 3: 8'11 x 7'5 (2.72m x 2.26m)

Bathroom

OUTSIDE

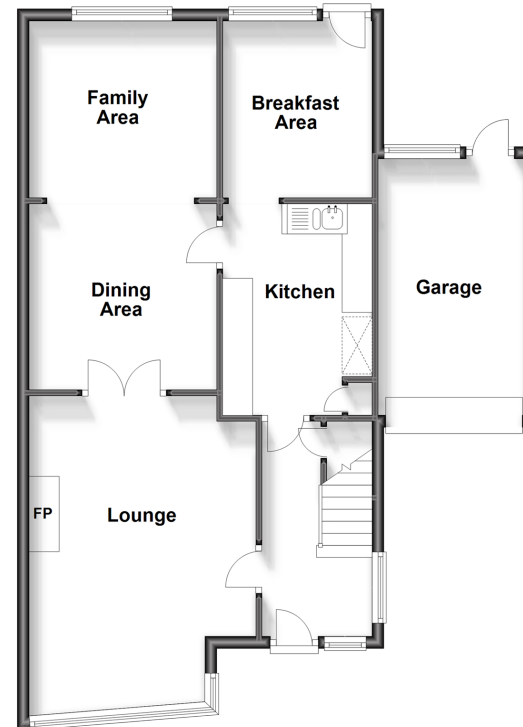
Front & Rear Garden

Driveway

Garage

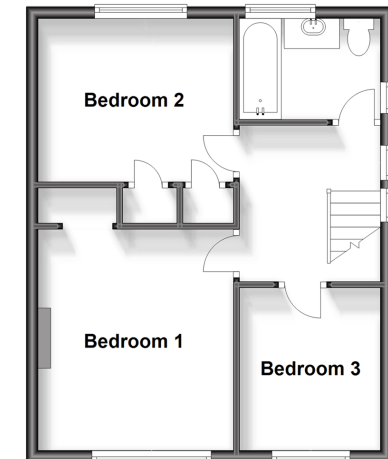
Ground Floor

Approx. 72.7 sq. metres (782.3 sq. feet)



First Floor

Approx. 41.0 sq. metres (441.2 sq. feet)



Call Tonbridge - 01732 770755 ■ wardsofkent.co.uk

■ Legal advice should be taken to verify fixtures/fittings, planning, alterations and/or lease details
 ■ Through a Homewise Home For Life Plan people aged 60+ can secure this property for up to 59% less, by purchasing a Lifetime Lease.

■ Appliances & services are untested, dimensions are approximate and floor plans are not to scale



14133671/20240203/JW/KA