



Price
£650,000

Freehold

4x  2x  2x 

**Riding Park,
Hildenborough,
Tonbridge, Kent, TN11**

OVER 60?

Secure this property
for up to **59% less!**

Wards
Helping you move forwards



Main features

- Substantial family home in popular Hildenborough
- Beautiful kitchen diner
- Large sunny rear garden, giving the property extra potential (subject to consents)
- Off road parking to the front of the property
- Situated at the end of a quite cul de sac

Accommodation

GROUND FLOOR

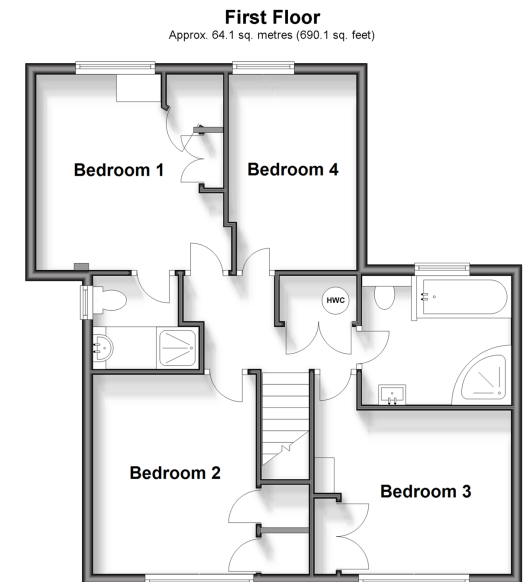
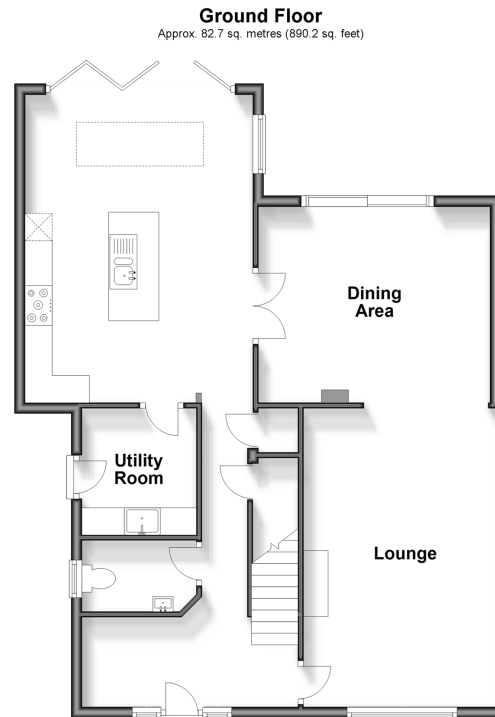
Hallway
Lounge: 18'6 x 11'9 (5.64m x 3.58m)
Dining Area: 13'9 x 12'3 (4.19m x 3.74m)
Kitchen: 19'3 x 13'7 (5.87m x 4.14m)
Utility Room
Downstairs Cloakroom

FIRST FLOOR

Landing
Bedroom 1: 12'9 x 11'5 (3.89m x 3.48m)
En Suite Shower Room
Bedroom 2: 11'7 x 7'5 (3.53m x 2.26m)
Bedroom 3: 12'3 x 9'6 (3.74m x 2.90m)
Bedroom 4: 11'9 x 9'8 (3.58m x 2.95m)
Bathroom

OUTSIDE

Rear Garden
Off Road Parking



Call Tonbridge - 01732 770755 ■ wardsofkent.co.uk

■ Legal advice should be taken to verify fixtures/fittings, planning, alterations and/or lease details
■ Through a Homewise Home For Life Plan people aged 60+ can secure this property for up to 59% less, by purchasing a Lifetime Lease.

■ Appliances & services are untested, dimensions are approximate and floor plans are not to scale