



**Price**  
**£435,000**

**Freehold**

3x  1x  2x 

**Maltings Close, Hadlow,  
Tonbridge, Kent, TN11**

**OVER 60?**

Secure this property  
for up to **59% less!**

*Wards*  
Helping you move forwards





## Main features

- Well presented throughout with neutral décor
- Private sought after location within cul-de-sac
- Corner plot with good sized front and rear gardens
- Parking on driveway and integral garage
- Snug/office additional room downstairs ideal for those requiring extra space

## Accommodation

### GROUND FLOOR

Hallway  
Downstairs Cloakroom  
Lounge: 17'5 x 10'7 (5.31m x 3.23m)  
Kitchen/Diner: 17'10 x 11'5 (5.44m x 3.48m)  
Snug: 9'9 x 6'5 (2.97m x 1.96m)

### FIRST FLOOR

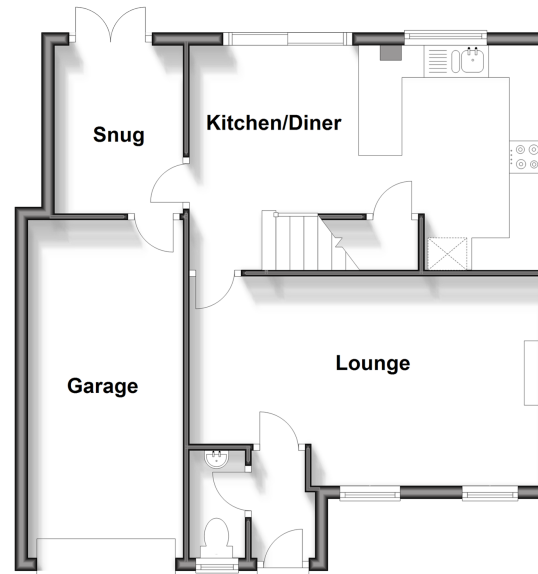
Landing  
Bedroom 1: 10'8 x 10'7 (3.25m x 3.23m)  
Bedroom 2: 9'6 x 8'3 (2.90m x 2.52m)  
Bedroom 3: 7'9 x 6'11 (2.36m x 2.11m)  
Shower Room

### OUTSIDE

Garage  
Off Road Parking  
Rear Garden

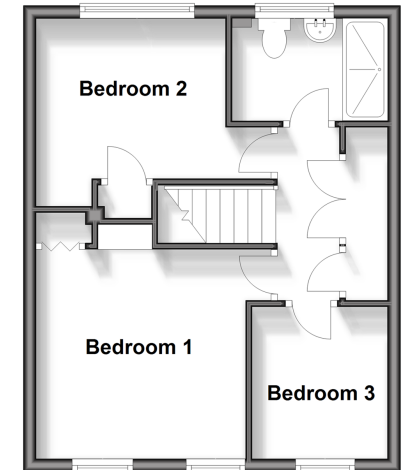
### Ground Floor

Approx. 58.5 sq. metres (629.8 sq. feet)



### First Floor

Approx. 37.7 sq. metres (405.7 sq. feet)



**Call Tonbridge - 01732 770755 ■ [wardsofkent.co.uk](http://wardsofkent.co.uk)**

■ Legal advice should be taken to verify fixtures/fittings, planning, alterations and/or lease details  
■ Through a Homewise Home For Life Plan people aged 60+ can secure this property for up to 59% less, by purchasing a Lifetime Lease.

■ Appliances & services are untested, dimensions are approximate and floor plans are not to scale



14133738/20240104/JW/JW