



Price

£290,000

Leasehold

2x  1x  1x 

**Cornflower Court,
Sovereign Way,
Tonbridge, Kent, TN9**

OVER 60?

Secure this property
for up to **59% less!**

Wards
Helping you move forwards



Main features

- Conveniently located just off the bustling Tonbridge High Street
- Open plan kitchen lounge ideal for entertaining
- Ideal for first time buyers or investors
- Close to Tonbridge Station
- No forward chain

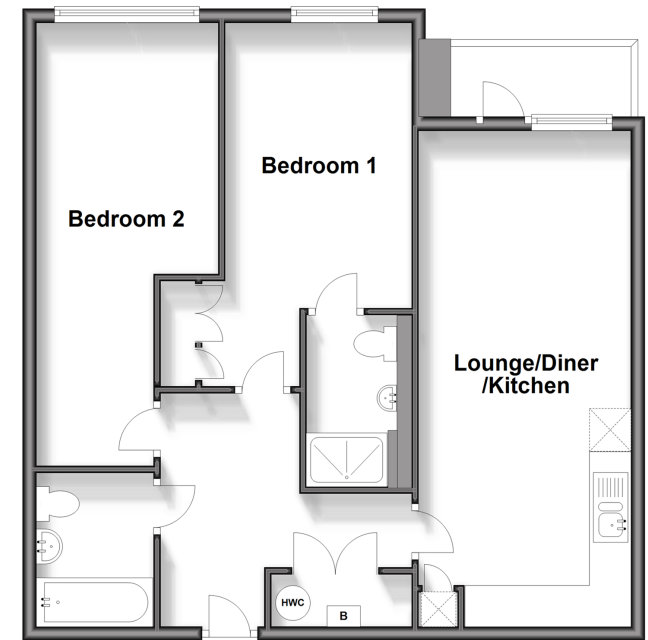
Accommodation

FIRST FLOOR

Hallway
 Lounge/Diner/Kitchen: 23'11 x 10'0 (7.29m x 3.05m)
 Balcony
 Bedroom 1: 17'1 x 8'10 (5.21m x 2.69m)
 En Suite Shower Room
 Bedroom 2: 20'9 x 9'0 (6.33m x 2.75m)
 Bathroom

First Floor

Approx. 69.8 sq. metres (751.0 sq. feet)



Call Tonbridge - 01732 770755 ■ wardsofkent.co.uk

■ Legal advice should be taken to verify fixtures/fittings, planning, alterations and/or lease details
 ■ Through a Homewise Home For Life Plan people aged 60+ can secure this property for up to 59% less, by purchasing a Lifetime Lease.

■ Appliances & services are untested, dimensions are approximate and floor plans are not to scale



14133769/20240319/MC/JW