



Guide Price
£280,000

**Share of
Freehold**

2x  2x  1x 

**Pembury Road,
Tonbridge, Kent, TN9**

OVER 60?

Secure this property
for up to **59% less!**

Wards
Helping you move forwards



Main features

- Sold end chain
- Excellent first time purchase or investment opportunity
- Great location with amenities and station on doorstep
- Allocated off road parking in secure car park
- Access to communal gardens

Accommodation

SECOND FLOOR

Hallway

Lounge: 15'8 x 13'10 (4.78m x 4.22m)

Kitchen: 10'5 x 9'4 (3.18m x 2.85m)

Bedroom 1: 13'0 x 10'5 (3.97m x 3.18m)

En Suite Shower Room

Bedroom 2: 12'9 x 6'9 (3.89m x 2.06m)

Bathroom

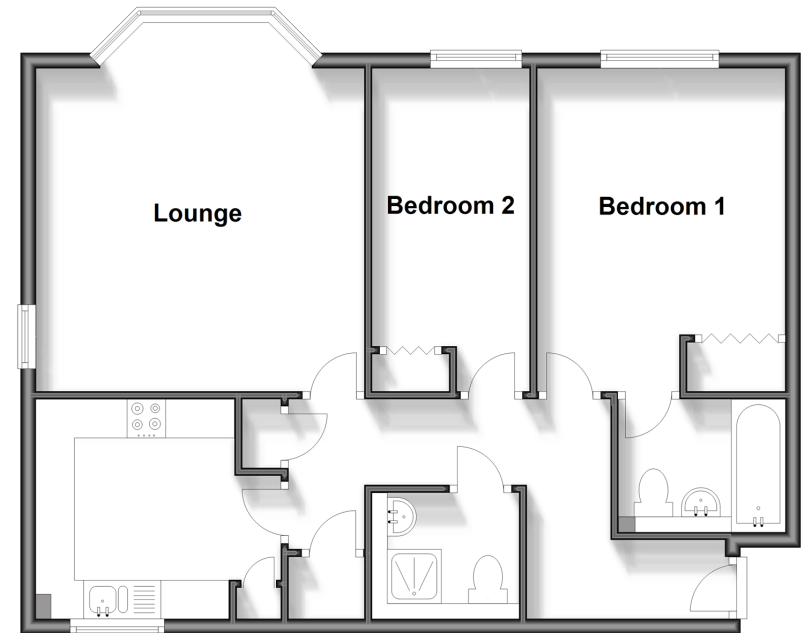
OUTSIDE

Allocated Parking

Communal Garden

Second Floor

Approx. 68.8 sq. metres (740.6 sq. feet)



Call Tonbridge - 01732 770755 ■ wardsofkent.co.uk

■ Legal advice should be taken to verify fixtures/fittings, planning, alterations and/or lease details
 ■ Through a Homewise Home For Life Plan people aged 60+ can secure this property for up to 59% less, by purchasing a Lifetime Lease.

■ Appliances & services are untested, dimensions are approximate and floor plans are not to scale



14133785/20240517/JD11/GA