



**Guide Price**  
**£350,000**

**Leasehold**

2x  2x  1x 

**Pembury Road,  
Tonbridge, Kent, TN9**

**OVER 60?**

Secure this property  
for up to **59% less!**

*Wards*  
Helping you move forwards





## Main features

- Ground floor apartment with separate living kitchen area
- Own private patio area
- Allocated parking in residents car park
- Close to mainline station and the High Street
- Modern shower room and en suite

## Accommodation

### GROUND FLOOR

#### Hallway

Lounge: 16'1 x 13'5 (4.91m x 4.09m)

Kitchen: 10'0 x 8'6 (3.05m x 2.59m)

Bedroom 1: 14'1 x 8'8 (4.30m x 2.64m)

En Suite Shower Room: 6'5 x 5'1 (1.96m x 1.55m)

Bedroom 2: 13'7 x 6'3 (4.14m x 1.91m)

Shower Room: 5'4 x 4'3 (1.63m x 1.30m)

### OUTSIDE

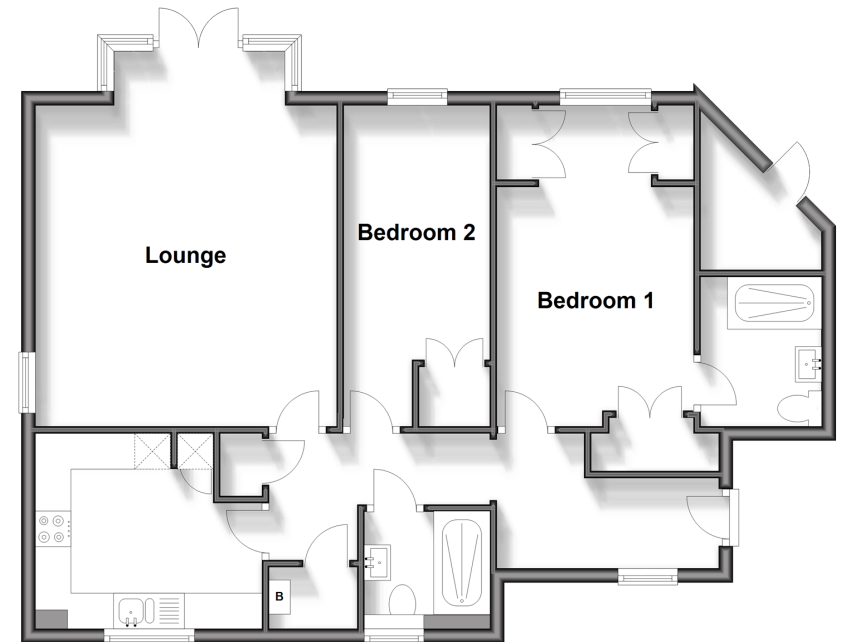
Private Patio

Communal Garden

Allocated Parking

### Ground Floor

Approx. 74.8 sq. metres (805.1 sq. feet)



**Call Tonbridge - 01732 770755 ■ [wardsofkent.co.uk](http://wardsofkent.co.uk)**

■ Legal advice should be taken to verify fixtures/fittings, planning, alterations and/or lease details  
 ■ Through a Homewise Home For Life Plan people aged 60+ can secure this property for up to 59% less, by purchasing a Lifetime Lease.

■ Appliances & services are untested, dimensions are approximate and floor plans are not to scale



14133799/20240402/JD11/GA