



**Price**

**£50,000**

**Leasehold**

1x  1x  1x 

**Castle Court, Hadlow  
Road, Tonbridge, Kent,  
TN9**

*Wards*  
Helping you move forwards





## Main features

- **Spacious first floor apartment for the over 65's with lift access**
- **Communal lounge and dining room**
- **24 hour care line system**
- **Beautiful landscaped communal gardens**
- **Walking distance to local amenities**

## Accommodation

### FIRST FLOOR

#### Hallway

Lounge/Diner: 17'0 x 12'1 (5.19m x 3.69m)

Kitchen: 10'10 x 6'8 (3.30m x 2.03m)

Bedroom 1: 14'1 x 11'4 (4.30m x 3.46m)

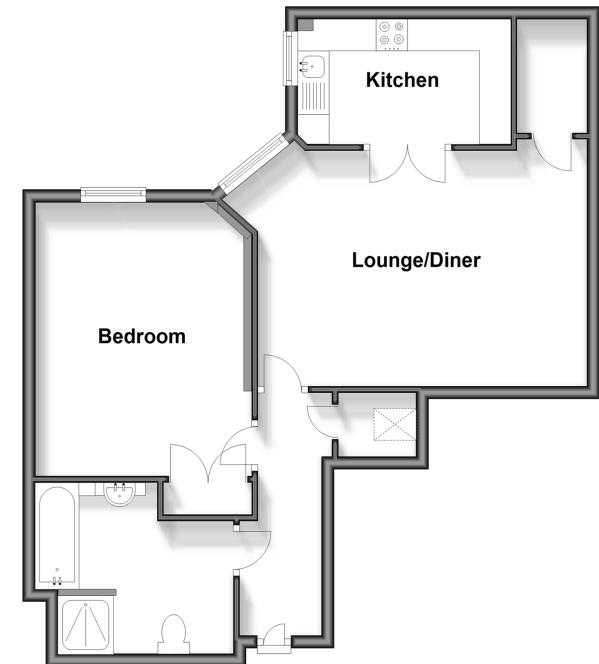
Bathroom: 9'5 x 8'11 (2.87m x 2.72m)

### OUTSIDE

Residents Car Park

Communal Garden

**First Floor**  
Approx. 59.6 sq. metres (641.4 sq. feet)



**Call Tonbridge - 01732 770755 ■ [wardsofkent.co.uk](http://wardsofkent.co.uk)**

■ Legal advice should be taken to verify fixtures/fittings, planning, alterations and/or lease details

■ Appliances & services are untested, dimensions are approximate and floor plans are not to scale



14133800/20240325/JW/JW