



Price

£725,000

Freehold

3x  1x  1x 

**Upper Green Lane,
Shipbourne, Tonbridge,
Kent, TN11**

Wards
Helping you move forwards



Main features

- Beautifully presented family home surrounded by countryside views
- Recently updated and extended giving the property that spacious luxury feel.
- Fantastic location with excellent schools and amenities near by
- Brilliant garden with extensive patio ideal for those summer events.
- Garage and off road parking

Accommodation

GROUND FLOOR

Entrance Hall
 Kitchen/Diner: 17'7" x 15'6" (5.36m x 4.73m)
 Lounge: 16'10" x 12'0" (5.13m x 3.66m)
 Office: 10'5" x 10'5" (3.18m x 3.18m)
 Utility/Cloakroom

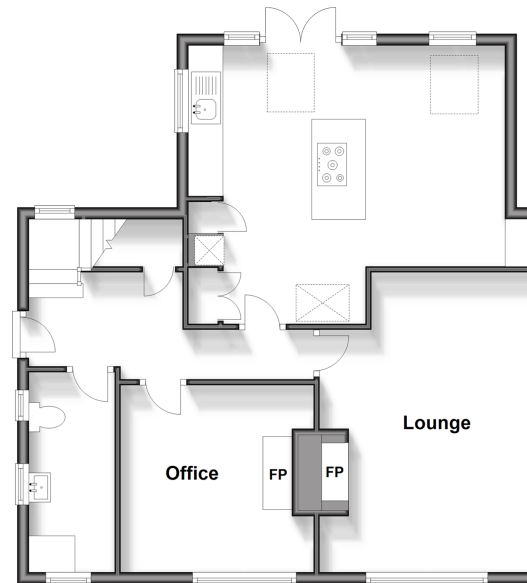
FIRST FLOOR

Landing
 Bedroom 1: 11'11" x 10'6" (3.63m x 3.20m)
 Bedroom 2: 12'6" x 8'6" (3.81m x 2.59m)
 Bedroom 3: 11'5" x 10'5" (3.48m x 3.18m)
 Bathroom

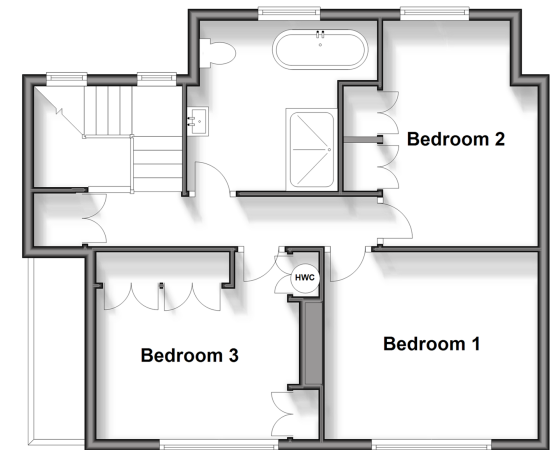
OUTSIDE

Garage
 Off Road Parking
 Front & Rear Gardens

Ground Floor
 Approx. 68.2 sq. metres (733.7 sq. feet)



First Floor
 Approx. 54.5 sq. metres (586.6 sq. feet)



Call Tonbridge - 01732 770755 ■ wardsof Kent.co.uk

■ Legal advice should be taken to verify fixtures/fittings, planning, alterations and/or lease details

■ Appliances & services are untested, dimensions are approximate and floor plans are not to scale



14133843/20240327/MB/GA