



**OVER 60?**

Secure this property  
for up to **59% less!**

**Price**  
**£500,000**

**Freehold**

2x  2x  1x 

**Hildenfields, Tonbridge,  
Kent, TN10**

*Wards*  
Helping you move forwards



## Main features

- Immaculately presented within gated complex
- Recently renovated kitchen with integrated appliances
- Direct access to fields behind property
- Allocated parking and charming rear garden
- Available with no onward chain

## Accommodation

### GROUND FLOOR

Hallway  
Downstairs Cloakroom  
Lounge: 15'0 x 10'8 (4.58m x 3.25m)  
Dining Area: 14'1 x 10'7 (4.30m x 3.23m)  
Kitchen: 9'11 x 6'9 (3.02m x 2.06m)

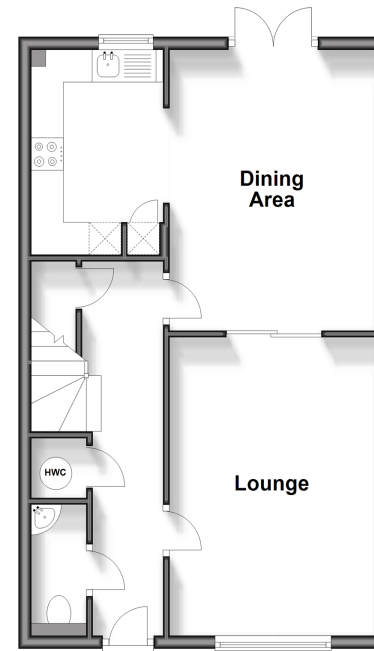
### FIRST FLOOR

Landing  
Bedroom 1: 10'8 x 10'8 (3.25m x 3.25m)  
En Suite Shower Room  
Bedroom 2: 11'4 x 10'9 (3.46m x 3.28m)  
Bathroom: 7'7 x 6'10 (2.31m x 2.08m)

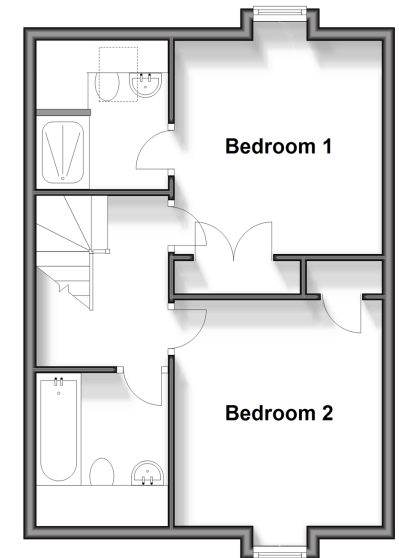
### OUTSIDE

Rear Garden  
Allocated Parking

**Ground Floor**  
Approx. 47.9 sq. metres (516.0 sq. feet)



**First Floor**  
Approx. 41.2 sq. metres (443.6 sq. feet)



**Call Tonbridge - 01732 770755 ■ [wardsofkent.co.uk](http://wardsofkent.co.uk)**

■ Legal advice should be taken to verify fixtures/fittings, planning, alterations and/or lease details  
■ Through a Homewise Home For Life Plan people aged 60+ can secure this property for up to 59% less, by purchasing a Lifetime Lease.

■ Appliances & services are untested, dimensions are approximate and floor plans are not to scale



14133853/20240502/MC/JW