



Price
£400,000

Freehold

3x  1x  2x 

**Sidney Close, Tunbridge
Wells, Kent, TN2**

OVER 60?

Secure this property
for up to **59% less!**

Wards
Helping you move forwards



Main features

- delightful semi detached home with garage en-bloc
- Extended on the ground floor
- Large rear and front gardens
- Located close to all amenities, mainline station and plenty of green spaces
- A short distance to good primary and secondary schools

Accommodation

GROUND FLOOR

Lounge / Diner: 22'7 x 10'8 (6.89m x 3.25m)

Kitchen: 13'10 x 8'2 (4.22m x 2.49m)

Utility: 13'4 x 8'2 (4.07m x 2.49m)

FIRST FLOOR

Bedroom 1 : 14'10 x 10'8 (4.52m x 3.25m)

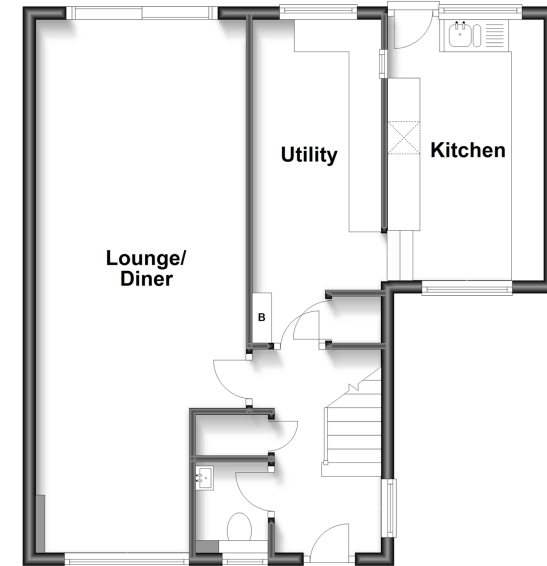
Bedroom 2: 10'11 x 8'5 (3.33m x 2.57m)

Bedroom 3: 10'7 x 6'7 (3.23m x 2.01m)

Bathroom: 8'2 x 6'1 (2.49m x 1.86m)

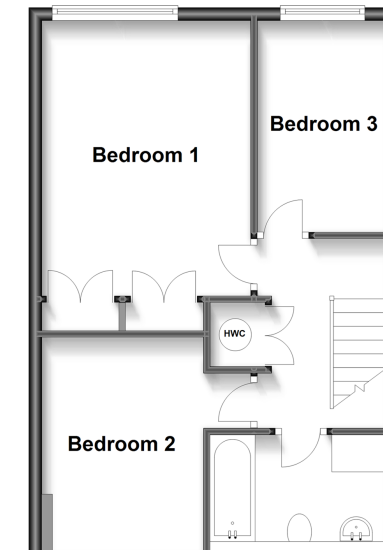
Ground Floor

Approx. 54.5 sq. metres (586.9 sq. feet)



First Floor

Approx. 44.3 sq. metres (477.1 sq. feet)



Call Tunbridge Wells - 01892 542767 ■ wardsof Kent.co.uk

- Legal advice should be taken to verify fixtures/fittings, planning, alterations and/or lease details
- Appliances & services are untested, dimensions are approximate and floor plans are not to scale
- Through a Homewise Home For Life Plan people aged 60+ can secure this property for up to 59% less, by purchasing a Lifetime Lease.



14233045/20230527/CG/RM