

OVER 60?

You could get up to
59% off the price!*



Price
£850,000
Freehold

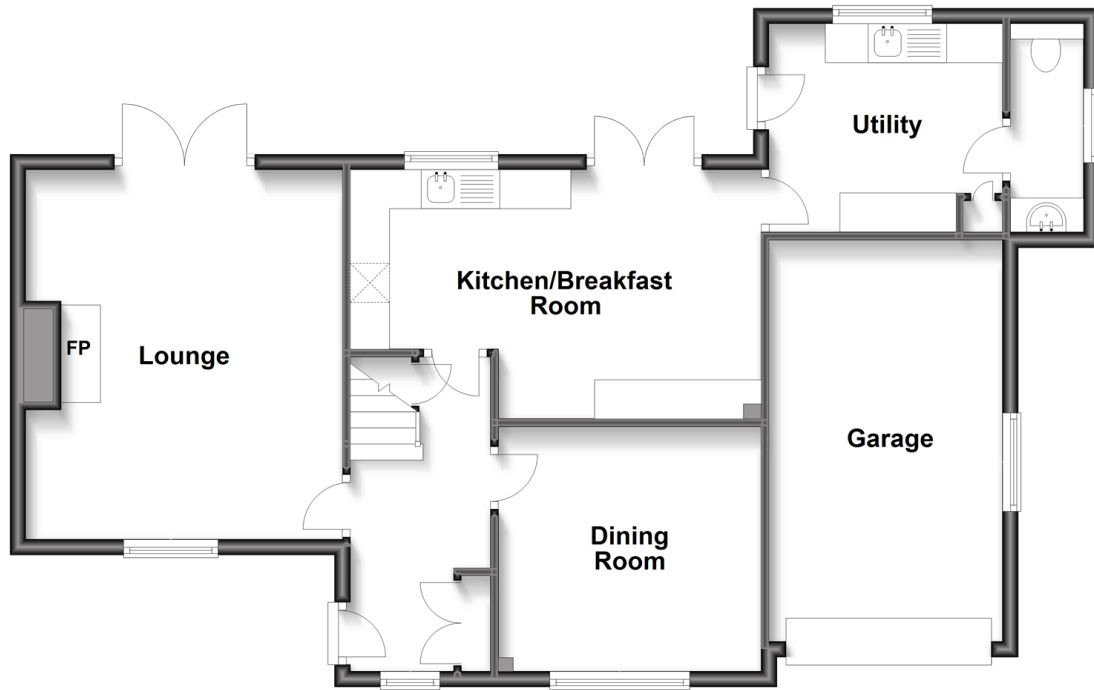
4x  2x  2x 

Dunstan Grove, Tunbridge Wells, Kent, TN4

Wards
Helping you move forwards

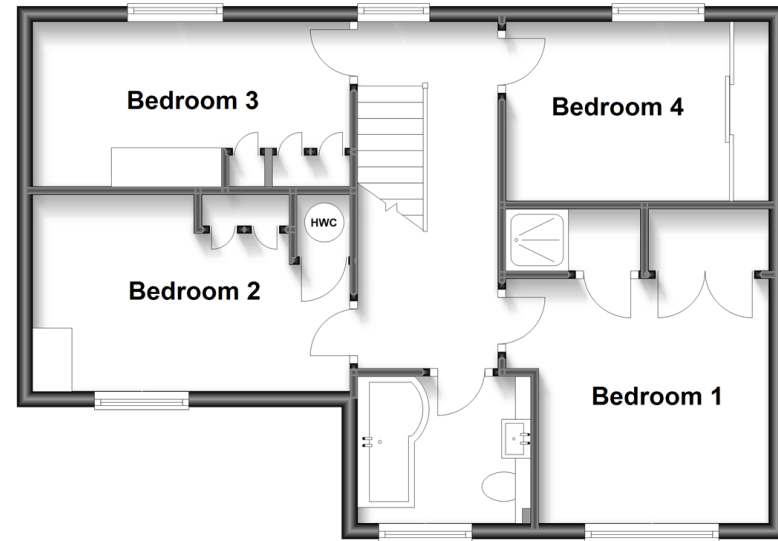
Ground Floor

Approx. 80.1 sq. metres (862.2 sq. feet)



First Floor

Approx. 53.2 sq. metres (572.8 sq. feet)



Accommodation

GROUND FLOOR

Hallway

Lounge: 15'6 x 13'3 (4.73m x 4.04m)

Dining Room: 10'11 x 10'4 (3.33m x 3.15m)

Kitchen/Breakfast Room: 17'2 x 10'5 (5.24m x 3.18m)

Utility Room: 9'6 x 8'11 (2.90m x 2.72m)

Downstairs Cloakroom

FIRST FLOOR

Landing

Bedroom 1: 13'3 x 8'2 (4.04m x 2.49m)

Bedroom 2: 13'1 x 7'0 (3.99m x 2.14m)

Bedroom 3: 11'1 x 10'4 (3.38m x 3.15m)

Bedroom 4: 9'2 x 7'7 (2.80m x 2.31m)

Bathroom

OUTSIDE

Garage: 17'1 x 12'6 (5.21m x 3.81m)

Front Garden

Rear Garden

Side Garden

Driveway



Main features

- Beautifully presented family home within the catchment area for outstanding schools
- Large bright dual aspect lounge with feature fireplace
- Modern fitted kitchen with separate utility room
- Wonderful rear garden with patio area - perfect for the whole family to enjoy
- Within walking distance of the mainline station



Nearest Schools

Primary Schools: St Barnabas C of E Primary 0.3 miles, The Wells Free School 0.5 miles, St James' C of E Junior School 0.8 miles

Secondary Schools: The Skinners' School 0.5 miles,



Transport Information

Train Stations: High Brooms 0.6 miles, Tunbridge Wells 0.8 miles, Frant 2.8 miles



Address

Dunstan Grove, Tunbridge Wells, Kent, TN4



Directions

For directions to this property please contact us.



Call Tunbridge Wells Branch 01892 542767 ■ wardsofkent.co.uk



- Legal advice should be taken to verify fixtures/fittings, planning, alterations and/or lease details
- Appliances & services are untested, dimensions are approximate and floor plans are not to scale
- Our Homewise partnership offer a 'Home for Life' plan to buyers over 60, granting a lifetime lease for your protection and reducing the purchase price by up to 59%



14238749/20221031/EM/RM