



Price
£450,000

Freehold

3x  1x  1x 

**Henwoods Crescent,
Pembury, Tunbridge
Wells, Kent, TN2**

OVER 60?

Secure this property
for up to **59% less!**



Video Tour available

Wards
Helping you move forwards



Main features

- Beautifully presented family home
- Diverse open planned living with natural light
- Located in the heart of Pembury and a short distance to local amenities
- Fantastic size garden, large patio area and spread over multiple levels.
- situated in a quiet cul-de-sac

Accommodation

GROUND FLOOR

Porch

Lounge : 24'4 x 11'6 (7.42m x 3.51m)

Dining Area

Kitchen: 15'9 x 8'6 (4.80m x 2.59m)

FIRST FLOOR

Landing

Bedroom 1: 12'2 x 9'6 (3.71m x 2.90m)

Bedroom 2: 12'3 x 8'5 (3.74m x 2.57m)

Bedroom 3: 11'9 x 8'6 (3.58m x 2.59m)

Bathroom

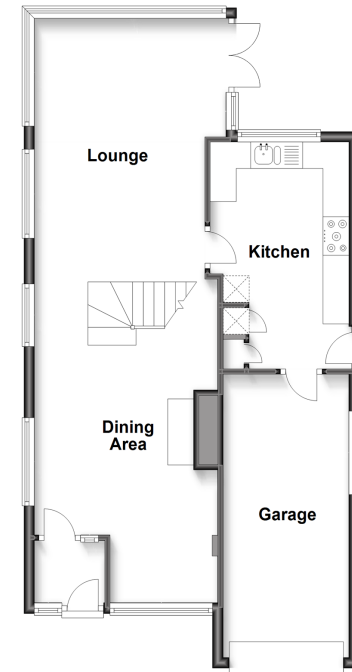
OUTSIDE

Garage: 17'6 x 7'9 (5.34m x 2.36m)

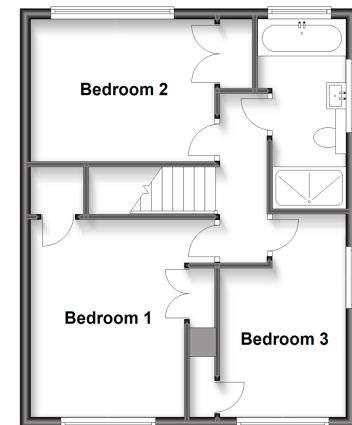
Driveway

Front and Rear Gardens

Ground Floor
Approx. 66.1 sq. metres (711.0 sq. feet)



First Floor
Approx. 45.6 sq. metres (490.6 sq. feet)



Call Tunbridge Wells - 01892 542767 ■ wardsof Kent.co.uk

- Legal advice should be taken to verify fixtures/fittings, planning, alterations and/or lease details
- Appliances & services are untested, dimensions are approximate and floor plans are not to scale
- Through a Homewise Home For Life Plan people aged 60+ can secure this property for up to 59% less, by purchasing a Lifetime Lease.



14238781/20221231/EM/GD