



Price
£290,000

Leasehold

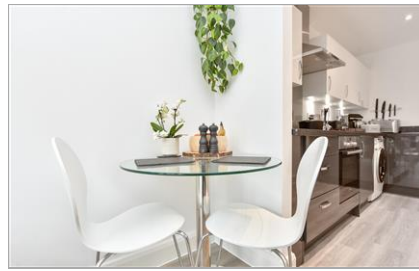
2x  1x  1x 

**Hawthorn House, The
Avenue, Tunbridge
Wells, Kent, TN2**

OVER 60?

Secure this property
for up to **59% less!**

Wards
Helping you move forwards



Main features

- **Spacious modern first floor apartment with Juliet balcony**
- **Semi open plan lounge and kitchen areas**
- **Available full purchase or shared ownership**
- **Allocated parking space and access to electric car charging points**
- **Stylish kitchen and bathroom**

Accommodation

FIRST FLOOR

Hallway

Lounge/Diner: 12'11 x 12'6 (3.94m x 3.81m)

Kitchen: 10'10 x 5'11 (3.30m x 1.80m)

Bedroom 1: 12'9 x 9'0 (3.89m x 2.75m)

Bedroom 2: 11'10 x 10'0 (3.61m x 3.05m)

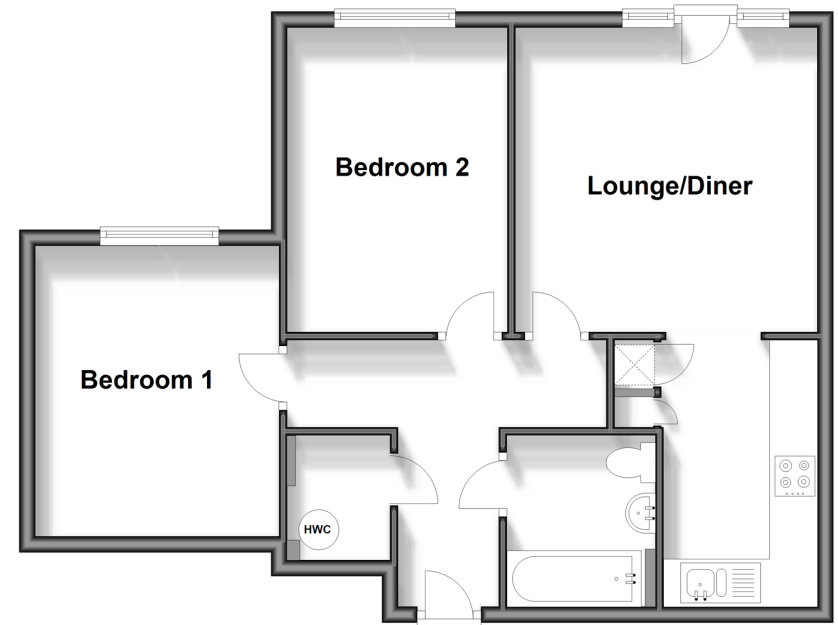
Bathroom: 6'9 x 5'11 (2.06m x 1.80m)

OUTSIDE

Allocated Parking

First Floor

Approx. 58.4 sq. metres (628.1 sq. feet)



Call Tunbridge Wells - 01892 542767 ■ wardsofkent.co.uk

■ Legal advice should be taken to verify fixtures/fittings, planning, alterations and/or lease details
 ■ Through a Homewise Home For Life Plan people aged 60+ can secure this property for up to 59% less, by purchasing a Lifetime Lease.

■ Appliances & services are untested, dimensions are approximate and floor plans are not to scale



14239237/20240413/MC/JW