



**Price**  
**£650,000**

**Freehold**

2x  1x  2x 

**London Road, West  
Kingsdown, Kent, TN15**

**OVER 60?**

Secure this property  
for up to **59% less!**

*Wards*  
Helping you move forwards





## Main features

- Chain free
- Multi car driveway
- Central village location
- Large rooms with high ceilings give this home a sense of space
- Large garden with many mature shrubs

## Accommodation

### GROUND FLOOR

#### Hallway

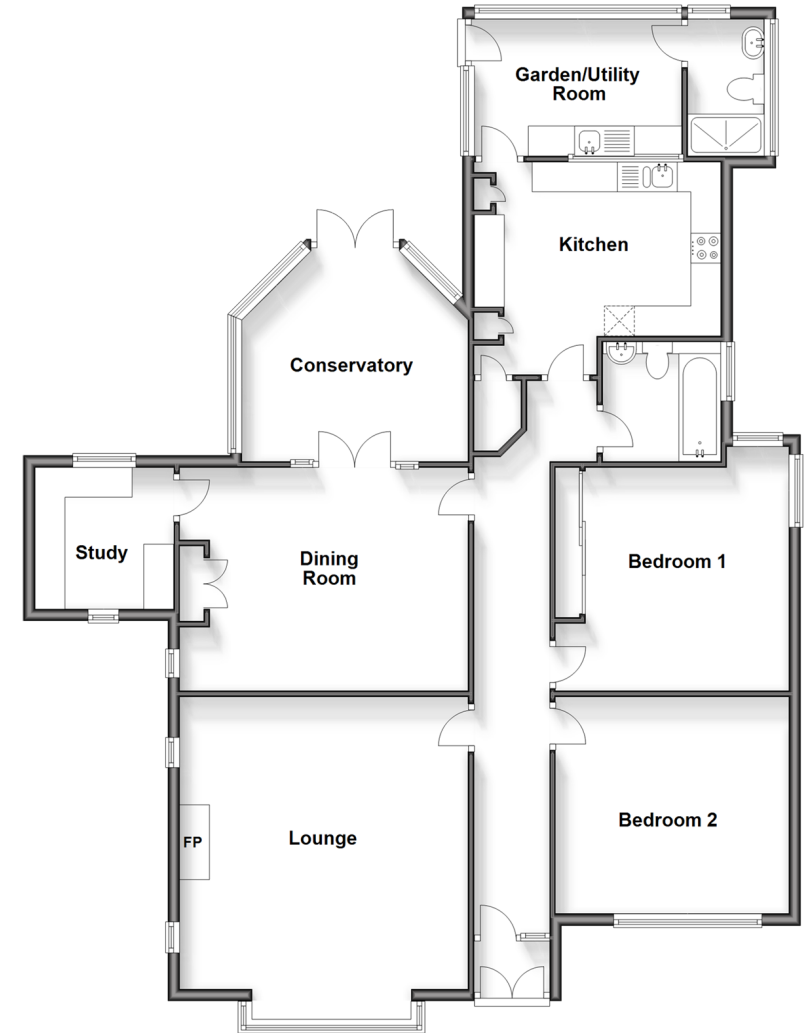
- Lounge: 16'0 x 16'0 (4.88m x 4.88m)
- Bedroom 1: 13'0 x 13'0 (3.97m x 3.97m)
- Bedroom 2: 12'6 x 12'0 (3.81m x 3.66m)
- Dining Room: 16'0 x 13'3 (4.88m x 4.04m)
- Study: 7'8 x 7'4 (2.34m x 2.24m)
- Conservatory: 12'8 x 11'5 (3.86m x 3.48m)
- Bathroom: 6'7 x 6'6 (2.01m x 1.98m)
- Kitchen: 13'3 x 11'4 (4.04m x 3.46m)
- Utility Room: 11'9 x 7'4 (3.58m x 2.24m)
- Shower Room: 7'11 x 4'3 (2.41m x 1.30m)

### OUTSIDE

- Driveway
- Rear Garden

### Ground Floor

Approx. 135.9 sq. metres (1463.1 sq. feet)



**Call West Kingsdown - 01474 852816 ■ [wardsofkent.co.uk](http://wardsofkent.co.uk)**

- Legal advice should be taken to verify fixtures/fittings, planning, alterations and/or lease details
- Appliances & services are untested, dimensions are approximate and floor plans are not to scale
- Through a Homewise Home For Life Plan people aged 60+ can secure this property for up to 59% less, by purchasing a Lifetime Lease.



14416682/20240425/DW/JS