



Price

£180,000

2x  2x  1x 

**Surrey Close, London
Road, West Kingsdown,
Sevenoaks, Kent, TN15**

Wards
Helping you move forwards



Main features

- Over 45s residential park home site close to key main roads into London
- Private rear garden
- Allocated parking with guest spaces available
- Pets allowed
- Ideal purchase for retirement within a welcoming community

Accommodation

GROUND FLOOR

Entrance Hall

Lounge: 12'8 x 11'0 (3.86m x 3.36m)

Kitchen: 9'6 x 7'4 (2.90m x 2.24m)

Bathroom: 6'6 x 5'6 (1.98m x 1.68m)

Bedroom 1: 10'2 x 9'4 (3.10m x 2.85m)

En-suite Shower room: 7'10 x 4'10 (2.39m x 1.47m)

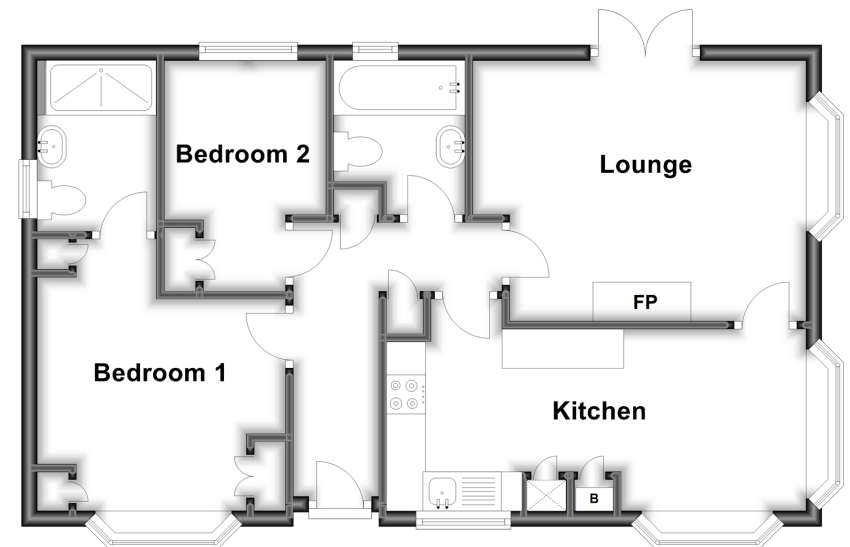
Bedroom 2: 9'4 x 6'8 (2.85m x 2.03m)

OUTSIDE

Garden

Ground Floor

Approx. 57.0 sq. metres (613.1 sq. feet)



Call West Kingsdown - 01474 852816 ■ wardsofkent.co.uk

- If buying to let, the energy rating will need to be improved to at least 'E' rating before you can let the property
- Legal advice should be taken to verify fixtures/fittings, planning, alterations and/or lease details
- Appliances & services are untested, dimensions are approximate and floor plans are not to scale



14419108/20240503/DW/DW