



Price
£950,000

Freehold

5x  4x  2x 

**Hever Avenue, West
Kingsdown, Sevenoaks,
Kent, TN15**

OVER 60?

Secure this property
for up to **59% less!**

Wards
Helping you move forwards



Main features

- Detached house backing onto woodlands with bi-fold doors to the rear
- Plenty of space to create a home office/study space
- Private, electric gated driveway
- Located within walking distance to local amenities
- Recently built house finished to a high standard with luxury fixtures and fittings

Accommodation

GROUND FLOOR

Entrance Hallway
 Lounge: 20'1 x 16'0 (6.13m x 4.88m)
 Living Area: 16'9 x 9'11 (5.11m x 3.02m)
 Kitchen/Breakfast Area: 22'6 x 20'7 (6.86m x 6.28m)
 Utility Room: 12'1 x 7'4 (3.69m x 2.24m)
 Dining Room: 18'10 x 12'1 (5.74m x 3.69m)
 Bedroom 5: 18'0 x 9'9 (5.49m x 2.97m)
 En-suite Shower Room: 9'11 x 4'6 (3.02m x 1.37m)

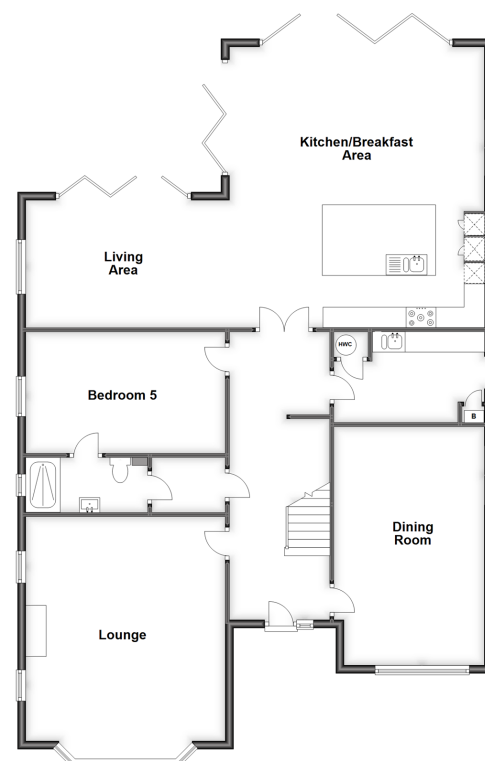
FIRST FLOOR

Landing
 Bedroom 1: 18'6 x 12'1 (5.64m x 3.69m)
 En-suite Shower Room: 11'11 x 3'9 (3.63m x 1.14m)
 Bedroom 2: 16'0 x 12'4 (4.88m x 3.76m)
 En-suite Shower Room: 9'2 x 6'8 (2.80m x 2.03m)
 Bedroom 3: 15'5 x 15'2 (4.70m x 4.63m)
 Bedroom 4: 12'0 x 9'0 (3.66m x 2.75m)
 Bathroom: 8'2 x 6'5 (2.49m x 1.96m)

OUTSIDE

Driveway
 Front Garden
 Rear Garden

Ground Floor
 Approx. 157.5 sq. metres (1694.8 sq. feet)



First Floor
 Approx. 100.2 sq. metres (1078.6 sq. feet)



Call West Kingsdown - 01474 852816 ■ wardsofkent.co.uk

■ Legal advice should be taken to verify fixtures/fittings, planning, alterations and/or lease details
 ■ Through a Homewise Home For Life Plan people aged 60+ can secure this property for up to 59% less, by purchasing a Lifetime Lease.

■ Appliances & services are untested, dimensions are approximate and floor plans are not to scale



14419731/20221206/DW/DW