



Price
£830,000

Freehold

4x  2x  1x 

**London Road, West
Kingsdown, Kent, TN15**

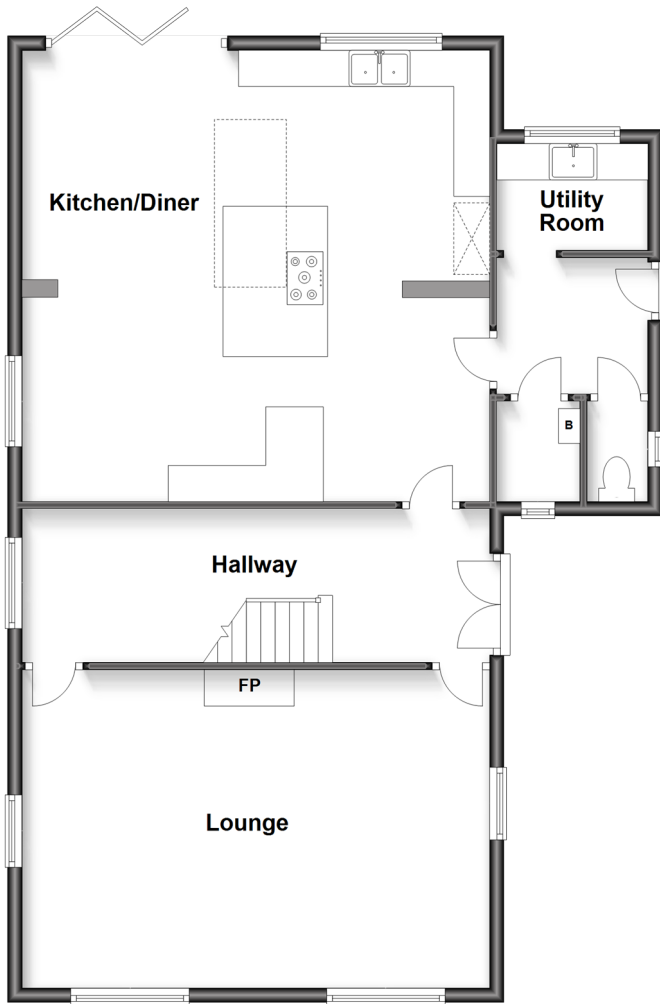
OVER 60?

Secure this property
for up to **59% less!**

Wards
Helping you move forwards

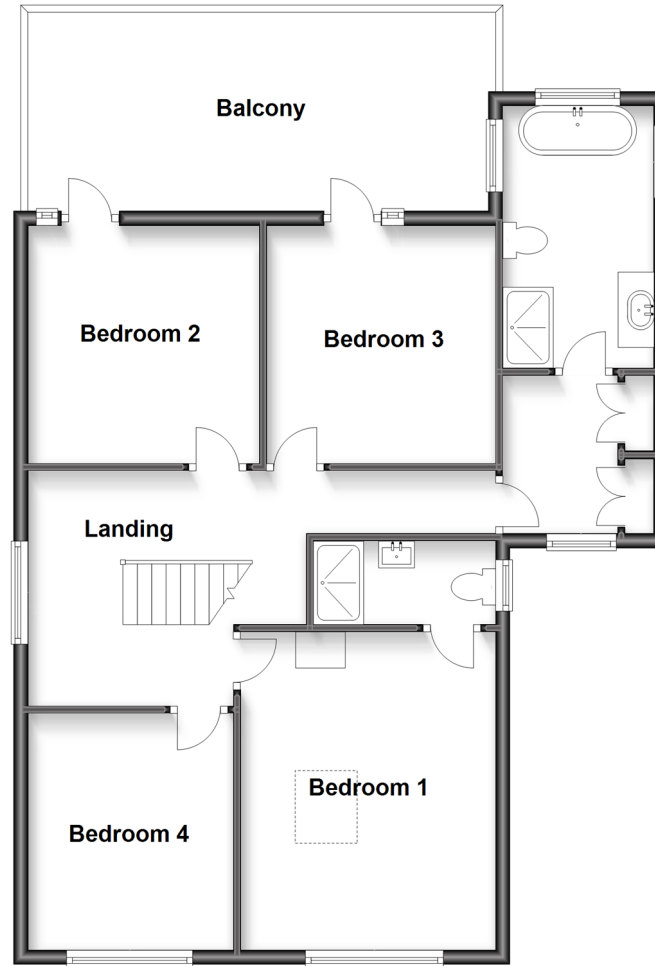
Ground Floor

Approx. 95.1 sq. metres (1023.3 sq. feet)



First Floor

Approx. 77.9 sq. metres (838.5 sq. feet)



Accommodation

GROUND FLOOR

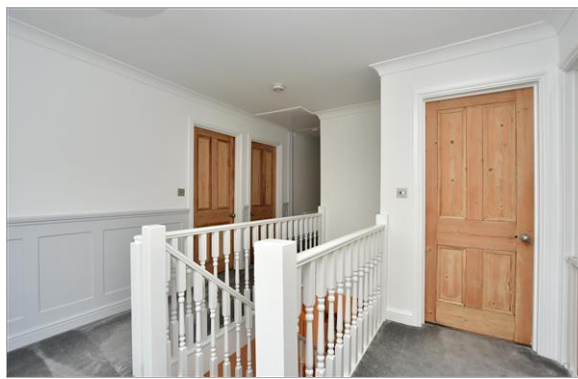
Hallway: 21'4 x 7'4 (6.51m x 2.24m)
Cloakroom: 4'1 x 2'9 (1.25m x 0.84m)
Lounge: 21'4 x 14'4 (6.51m x 4.37m)
Kitchen/Diner: 21'4 x 18'8 (6.51m x 5.69m)
Utility Room: 7'2 x 5'0 (2.19m x 1.53m)

FIRST FLOOR

Landing
Bedroom 1: 14'6 x 11'9 (4.42m x 3.58m)
En-suite Shower Room: 8'4 x 3'9 (2.54m x 1.14m)
Bedroom 2: 10'7 x 10'7 (3.23m x 3.23m)
Bedroom 3: 10'6 x 10'6 (3.20m x 3.20m)
Bedroom 4: 10'9 x 9'3 (3.28m x 2.82m)
Bathroom: 13'1 x 7'5 (3.99m x 2.26m)
Balcony

OUTSIDE

Driveway
Double Garage
Front Garden
Rear Garden
Summer House: 22'1 x 10'2 (6.74m x 3.10m)



Main features

- Ultra-high specification interior with modern fittings and fixtures
- Plenty of space for an office
- Large, detached double garage with potential for an annex (subject to planning permission)
- Beautiful working log fire in the lounge to help you get cosy during the winter months
- Benefiting from a large rear garden with a summer house, perfect for entertaining



Nearest Schools

Primary Schools: West Kingsdown CofE VC Primary 1.3 miles, Horton Kirby C of E Primary 3.4 miles

Secondary Schools: Helen Allison School 4.8 miles, The Bradbourne School 5.1 miles



Transport Information

Train Stations: Farningham Road 3.9 miles, Longfield 3.9 miles, Borough Green & Wrotham 4.1 miles



Address

London Road, West Kingsdown, Kent, TN15



Directions

For directions to this property please contact us.



Wards
Helping you move forwards

Call West Kingsdown Branch 01474 852816 ■ wardsofkent.co.uk



■ Legal advice should be taken to verify fixtures/fittings, planning, alterations and/or lease details ■ Appliances & services are untested, dimensions are approximate and floor plans are not to scale
■ Through a Homewise Home For Life Plan people aged 60+ can secure this property for up to 59% less, by purchasing a Lifetime Lease.



14419750/20221117/SL/DW