



Guide Price
£725,000

Freehold

6x  3x  2x 

**Hever Avenue, West
Kingsdown, Sevenoaks,
Kent, TN15**

OVER 60?

Secure this property
for up to **59% less!**

Wards
Helping you move forwards



Main features

- Extended to the rear with spacious lounge and separate breakfast area
- Privately gated parking
- Plenty of space for home office
- Close to key main roads into London via M20/M25
- Short walk to local village amenities including Co-op, delicatessen, fish & chip shop and off-license

Accommodation

GROUND FLOOR

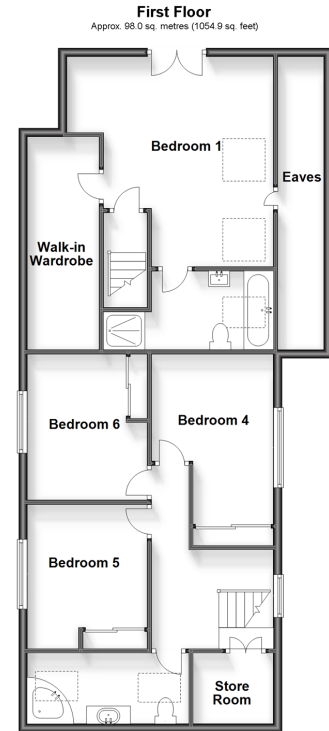
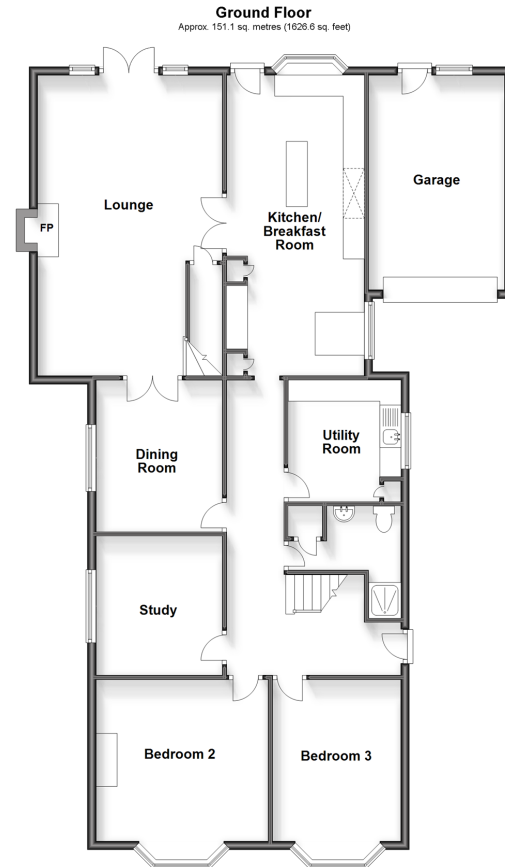
Hallway
 Lounge: 22'11 x 14'9 (6.99m x 4.50m)
 Kitchen: 23'1 x 10'5 (7.04m x 3.18m)
 Dining Room: 11'9 x 9'11 (3.58m x 3.02m)
 Study: 10'8 x 9'10 (3.25m x 3.00m)
 Utility Room: 9'4 x 8'3 (2.85m x 2.52m)
 Shower Room
 Bedroom 2: 13'4 x 12'6 (4.07m x 3.81m)
 Bedroom 3: 12'7 x 9'10 (3.84m x 3.00m)

FIRST FLOOR

Landing
 Bedroom 1: 16'7 x 13'4 (5.06m x 4.07m)
 Walk-in Wardrobe: 14'5 x 6'9 (4.40m x 2.06m)
 En-suite Bathroom : 8'1 x 5'11 (2.47m x 1.80m)
 Bedroom 4: 11'1 x 9'8 (3.38m x 2.95m)
 Bedroom 5: 11'8 x 9'8 (3.56m x 2.95m)
 Bedroom 6: 14'1 x 9'8 (4.30m x 2.95m)
 Shower Room: 12'6 x 5'9 (3.81m x 1.75m)

OUTSIDE

Driveway
 Garage: 18'5 x 9'7 (5.62m x 2.92m)
 Rear Garden



Call West Kingsdown - 01474 852816 ■ wardsofkent.co.uk

- Legal advice should be taken to verify fixtures/fittings, planning, alterations and/or lease details
- Appliances & services are untested, dimensions are approximate and floor plans are not to scale
- Through a Homewise Home For Life Plan people aged 60+ can secure this property for up to 59% less, by purchasing a Lifetime Lease.



14419756/20240406/YK/DW