



Price

£250,000

2x  2x  1x 

**Millview Park, London
Road, West Kingsdown,
Kent, TN15**

Wards
Helping you move forwards



Main features

- **Brand new residential park home for over 55's**
- **Plenty of guest parking**
- **Low running cost accommodation**
- **Central village location close to key main roads into London via M20/M25**
- **Luxurious home now available to buy**

Accommodation

GROUND FLOOR

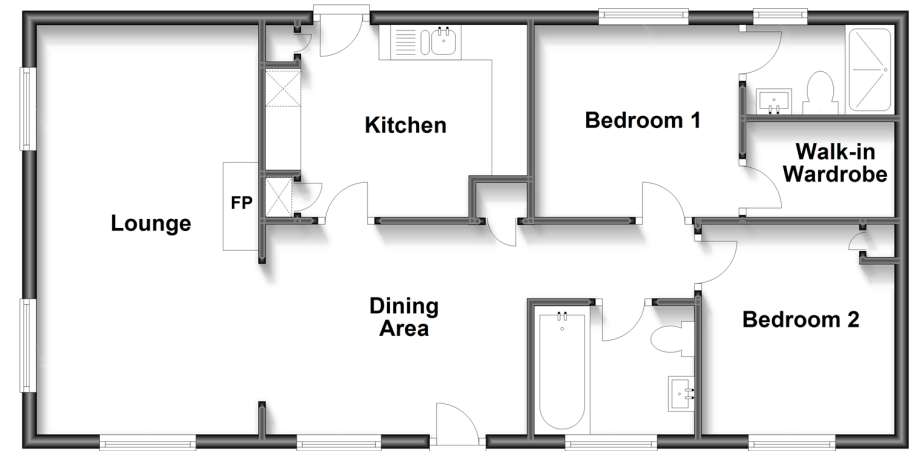
Lounge: 19'2 x 10'2 (5.85m x 3.10m)
 Dining Area: 12'1 x 9'8 (3.69m x 2.95m)
 Kitchen: 11'6 x 9'2 (3.51m x 2.80m)
 Bedroom 1: 9'7 x 9'2 (2.92m x 2.80m)
 Walk-in Wardrobe: 6'10 x 4'5 (2.08m x 1.35m)
 En-suite Shower Room : 6'10 x 4'7 (2.08m x 1.40m)
 Bedroom 2: 9'4 x 8'6 (2.85m x 2.59m)
 Bathroom : 7'6 x 5'11 (2.29m x 1.80m)

OUTSIDE

Allocated Parking

Ground Floor

Approx. 70.9 sq. metres (763.6 sq. feet)



Call West Kingsdown - 01474 852816 ■ wardsofkent.co.uk

■ If buying to let, the energy rating will need to be improved to at least 'E' rating before you can let the property

■ Appliances & services are untested, dimensions are approximate and floor plans are not to scale

■ Legal advice should be taken to verify fixtures/fittings, planning, alterations and/or lease details



14419800/20230322/DW/DW