



Price
£255,000

2x  2x  1x 

Millview Park, London Road, West
Kingsdown, Kent, TN15

Wards
Helping you move forwards



Main features

- **Brand new residential over 55's park home**
- **Plenty of guest parking**
- **Low running cost accommodation**
- **Central village location close to key roads into London via M20/M25**
- **Luxurious home now available to buy**

Accommodation

GROUND FLOOR

Entrance Hallway

Lounge : 18'7 x 10'5 (5.67m x 3.18m)

Kitchen/Diner: 22'0 x 8'5 (6.71m x 2.57m)

Bedroom 1 : 9'9 x 9'3 (2.97m x 2.82m)

Walk-in Wardrobe: 4'9 x 4'4 (1.45m x 1.32m)

En-suite Shower Room : 7'10 x 4'7 (2.39m x 1.40m)

Bedroom 2: 9'2 x 8'7 (2.80m x 2.62m)

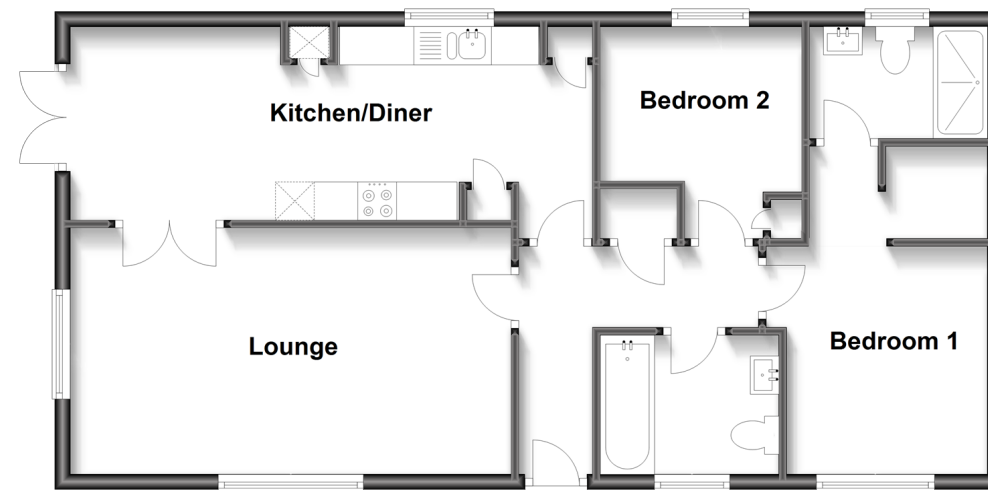
Bathroom : 7'6 x 5'11 (2.29m x 1.80m)

OUTSIDE

Allocated Parking

Ground Floor

Approx. 69.2 sq. metres (744.9 sq. feet)



Call West Kingsdown - 01474 852816 ■ wardsofkent.co.uk

■ If buying to let, the energy rating will need to be improved to at least 'E' rating before you can let the property

■ Appliances & services are untested, dimensions are approximate and floor plans are not to scale

■ Legal advice should be taken to verify fixtures/fittings, planning, alterations and/or lease details



14419801/20221101/SL/DW