



OVER 60?

Secure this property
for up to **59% less!**

Price

£500,000

Freehold

4x  4x  1x 

**Pursey Close, West
Kingsdown, Sevenoaks,
Kent, TN15**

Wards
Helping you move forwards



Main features

- Modern fitted kitchen and breakfast bar
- Close to key roads into London
- Short walk to local village shops including brand new Co-Op
- Modern interior with newly fitted wood flooring and carpets
- Parking for 2 cars with on-road parking in the cul-de-sac

Accommodation

GROUND FLOOR

Lounge: 18'4 x 16'3 (5.59m x 4.96m)

Kitchen: 10'10 x 10'3 (3.30m x 3.13m)

Toilet: 6'10 x 3'5 (2.08m x 1.04m)

FIRST FLOOR

Bedroom 1: 16'2 x 13'1 (4.93m x 3.99m)

En-suite Shower: 9'5 x 3'9 (2.87m x 1.14m)

Bedroom 2: 10'9 x 9'5 (3.28m x 2.87m)

Bathroom: 7'8 x 6'0 (2.34m x 1.83m)

SECOND FLOOR

Bedroom 3: 18'2 x 12'0 (5.54m x 3.66m)

Bedroom 4: 18'3 x 9'10 (5.57m x 3.00m)

Bathroom: 8'7 x 5'4 (2.62m x 1.63m)

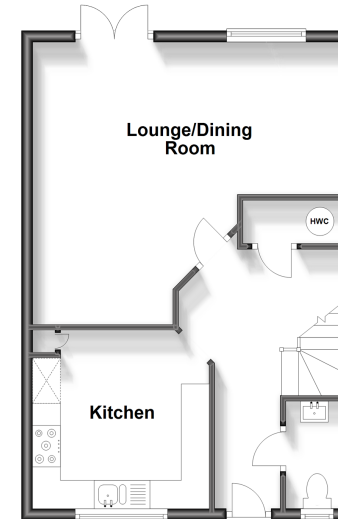
OUTSIDE

Driveway

Garden

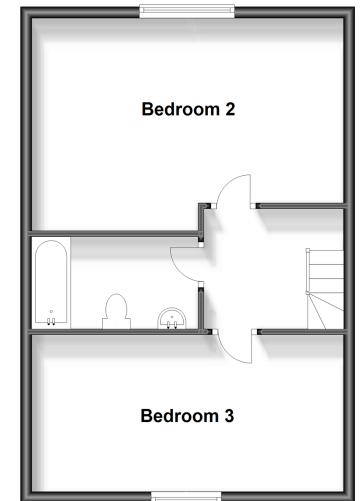
Ground Floor

Approx. 45.9 sq. metres (493.8 sq. feet)



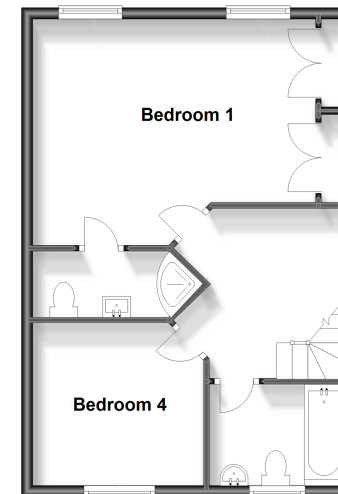
Second Floor

Approx. 46.6 sq. metres (501.2 sq. feet)



First Floor

Approx. 45.9 sq. metres (493.8 sq. feet)



Call West Kingsdown - 01474 852816 ■ wardsofKent.co.uk

- Legal advice should be taken to verify fixtures/fittings, planning, alterations and/or lease details
- Appliances & services are untested, dimensions are approximate and floor plans are not to scale
- Through a Homewise Home For Life Plan people aged 60+ can secure this property for up to 59% less, by purchasing a Lifetime Lease.



14419896/20230902/DW/DW