



OVER 60?

Secure this property
for up to **59% less!**

Price

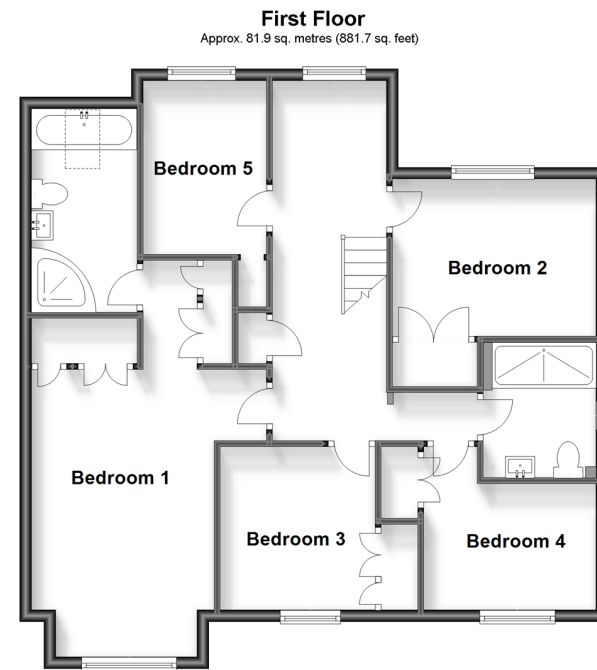
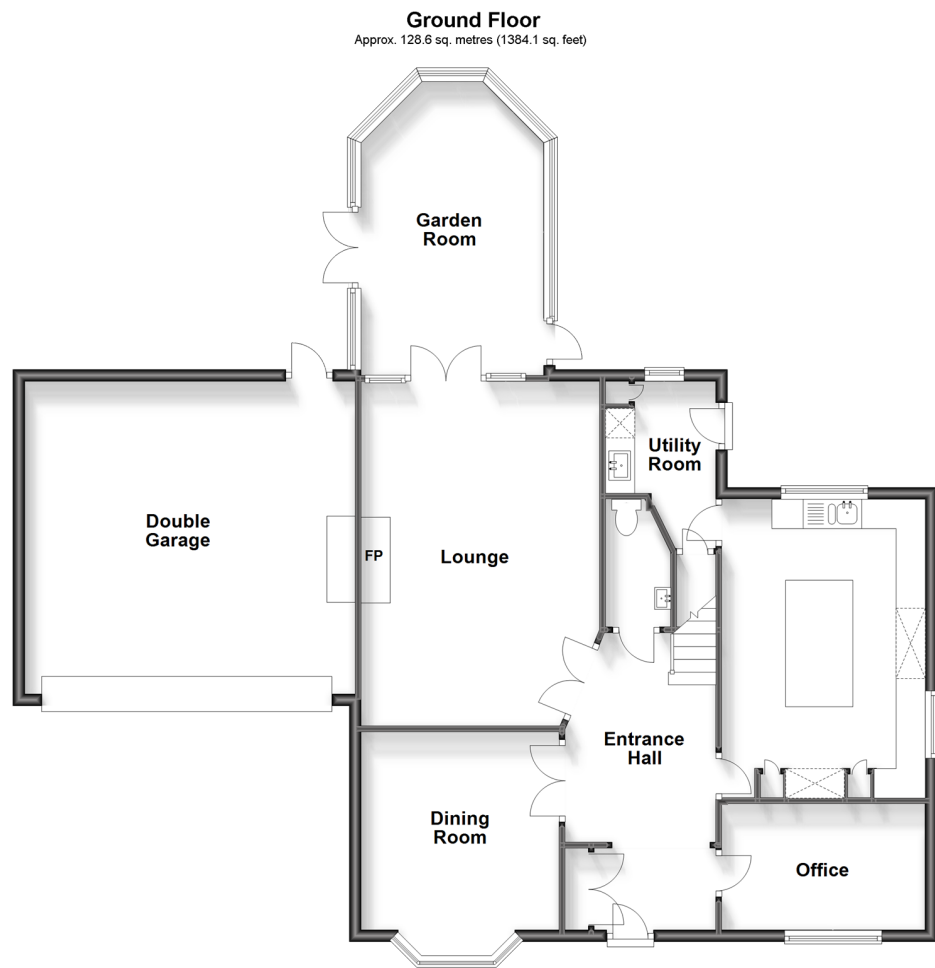
£900,000

Freehold

5x  2x  3x 

**Fen Meadow, Ightham,
Sevenoaks, Kent, TN15**

Wards
Helping you move forwards



Accommodation

GROUND FLOOR

Entrance Hall

Office: 11'2 x 6'4 (3.41m x 1.93m)

Dining Room: 12'6 x 11'1 (3.81m x 3.38m)

Kitchen: 17'6 x 11'3 (5.34m x 3.43m)

Lounge: 19'1 x 13'6 (5.82m x 4.12m)

Toilet: 4'0 x 3'9 (1.22m x 1.14m)

Utility Room: 9'0 x 6'1 (2.75m x 1.86m)

Garden Room: 13'7 x 10'0 (4.14m x 3.05m)

FIRST FLOOR

Bedroom 1: 15'7 x 10'5 (4.75m x 3.18m)

En suite Bathroom: 11'1 x 5'5 (3.38m x 1.65m)

Bedroom 2: 9'6 x 6'8 (2.90m x 2.03m)

Bedroom 3: 9'2 x 9'1 (2.80m x 2.77m)

Bedroom 4: 11'3 x 9'7 (3.43m x 2.92m)

Bedroom 5: 11'1 x 7'5 (3.38m x 2.26m)

Shower Room: 7'4 x 6'2 (2.24m x 1.88m)

Driveway

Double Garage

Garden

OUTSIDE



Main features

- Cul-de-sac location
- Modern kitchen
- Private landscaped garden
- Located in a sought after development on the outskirts of the ever popular village of Ightham
- Double garage comes with POD charging point, and further parking on the ample driveway



Nearest Schools

Primary Schools: Ightham Primary 0.9 miles, Borough Green Primary 1.1 miles, St George's C of E Voluntary Controlled Primary 1.4 miles, Sevenoaks Primary School 5.9 miles, Sevenoaks Preparatory School 5.9 miles



Transport Information

Train Stations: Borough Green & Wrotham 0.9 miles, Kemsing 1.5 miles, Otford 3.8 miles, Sevenoaks 6.8 miles



Address

Fen Meadow, Ightham, Sevenoaks, Kent, TN15



Directions

For directions to this property please contact us.





Call West Kingsdown Branch 01474 852816 ■ wardsofkent.co.uk



■ Legal advice should be taken to verify fixtures/fittings, planning, alterations and/or lease details ■ Appliances & services are untested, dimensions are approximate and floor plans are not to scale
■ Through a Homewise Home For Life Plan people aged 60+ can secure this property for up to 59% less, by purchasing a Lifetime Lease.



14419900/20231014/YK/JS